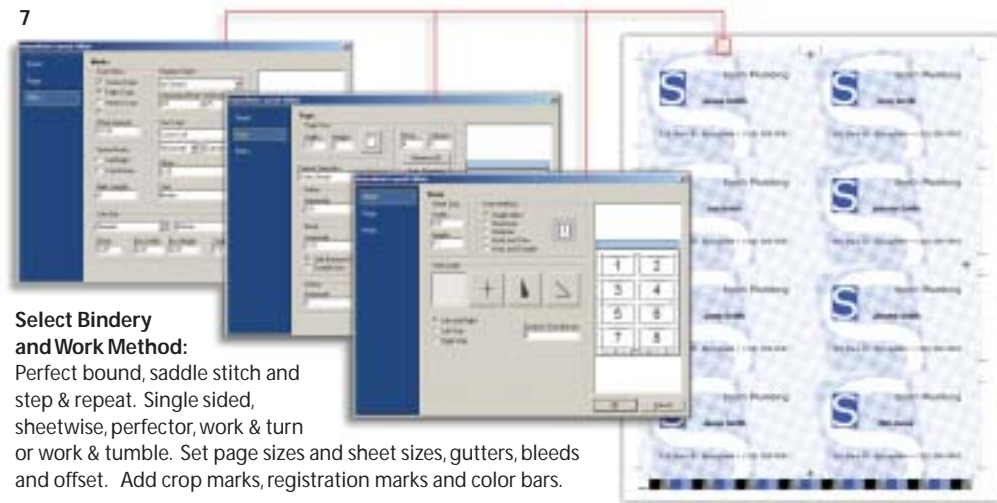


RIPit's StripRITE™ Raster Imposition

The Raster Imposition Technology Engine (RITE) drives RIPit's new raster imposition feature, StripRITE™. StripRITE allows you to generate spreads for books, step and repeat business cards, and perform other sophisticated imposition tasks quickly and easily.

Because imposition takes place after the file is interpreted, it's more reliable and straightforward than ever before. Impose PS, EPS, PDF and Scanned pages in the same master layout, add or remove pages, combine / disable / enable individual colors, and much more.

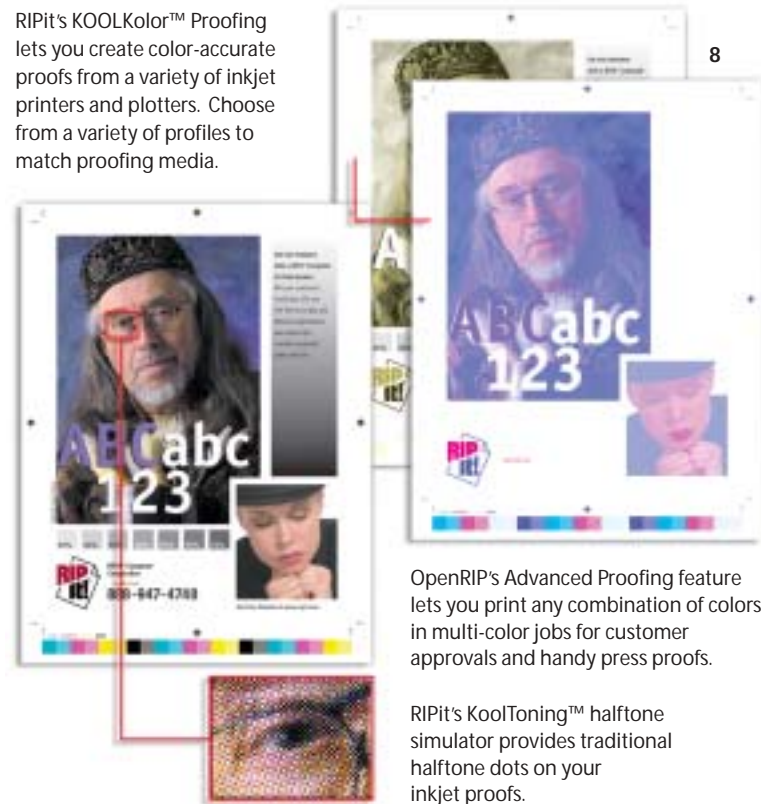


Select Bindery and Work Method:

Perfect bound, saddle stitch and step & repeat. Single sided, sheetwise, perfector, work & turn or work & tumble. Set page sizes and sheet sizes, gutters, bleeds and offset. Add crop marks, registration marks and color bars.

KOOLKolor™ Proofing

RIPit's KOOLKolor™ Proofing lets you create color-accurate proofs from a variety of inkjet printers and plotters. Choose from a variety of profiles to match proofing media.



OpenRIP's Advanced Proofing feature lets you print any combination of colors in multi-color jobs for customer approvals and handy press proofs.

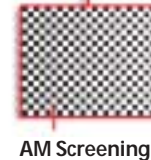
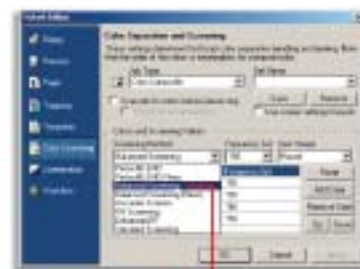
RIPit's KoolToning™ halftone simulator provides traditional halftone dots on your inkjet proofs.

AdvancedScan™ Scan to Plate

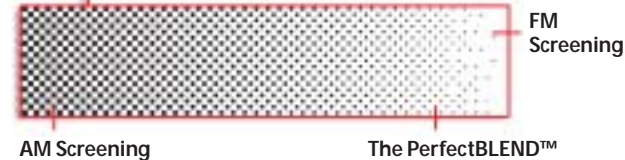
RIPit's AdvancedScan™ Scan to Plate feature was designed to replace that old analog camera and allow you to add paper based originals directly into your digital workflow. AdvancedScan lets you scan, cleanup, straighten and skew an image. Colorize text and images, remove and add tints, delete and place images, perform step & repeat and save finished scans as low res PDF files for remote proofing!



Screening Methods



OpenRIP offers a variety of screening solutions including: Adobe® Accurate Screens, Agfa® Balanced Screening and RIPit's PerfectBLEND™ Hybrid Screening. PerfectBLEND Hybrid Screening combines the benefits of traditional AM screening and FM screening for higher linescreens (up to 80% higher) without increased run difficulty.



The PerfectBLEND™

The Workflow

OpenRIP® Offset Edition A New Way to Work!



Digital photo courtesy PhaseONE



RIPit North America
7920 Alta Sunrise Dr., Ste. 250, Citrus Heights, CA 95610
Sales Phone: 888-947-4748 email: sales@ripit.com
Support Phone: 916-962-7050 Fax: 916-962-7053
www.ripit.com

RIPit Europe AB
Hulukvarnsgatan 8, SE-553 11, Jönköping, Sweden
Sales / Support Phone: + 46-36-35 47 90 Fax: + 46-36-16 01 05
email: labelrip@ripit.com

Complete Digital Workflow



OpenRIP Offset Edition is an Adobe® PostScript® 3™ RIP which runs under Windows® XP Professional on the industry-standard Intel® Pentium 4 platform. It handles even the most complex digital files and outputs them to a variety of imagers, inkjet printers, and plotters.

OpenRIP's interface embodies our workflow philosophy: first and foremost, it should be easy to use. It includes a variety of powerful, industry-leading features which are implemented in such a way that prepress operators will actually use them on a day-to-day basis. With OpenRIP's powerful tools, your prepress department can do more, and perform more efficiently — and that goes straight to your bottom line.

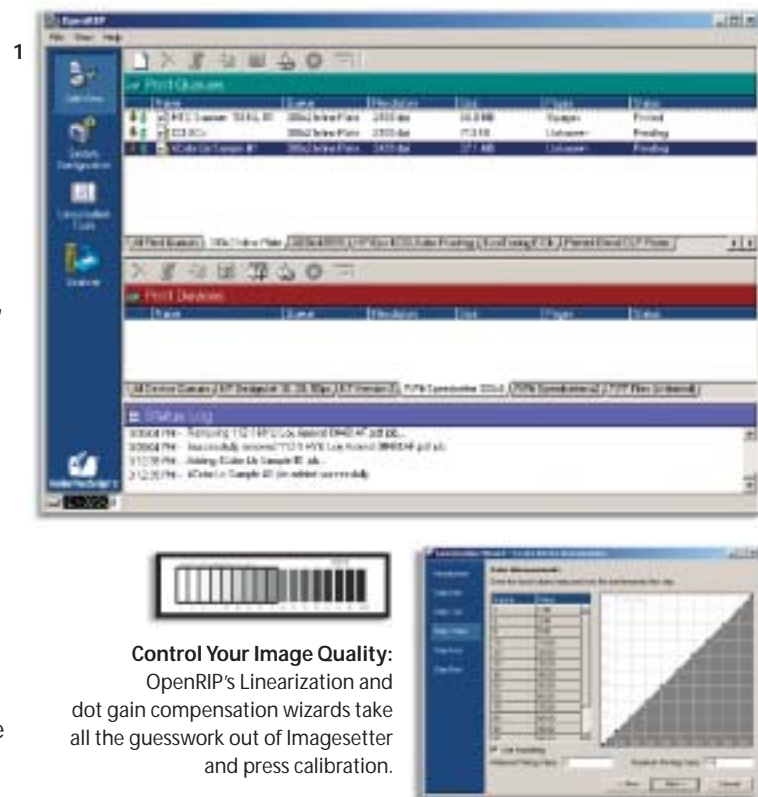
Custom Print Queues: What, How, Where and When

OpenRIP Offset Edition lets you customize your workflow by controlling output to match production needs with custom Print Queues. Print Queues¹ let you choose where the file is going, how the job will run and what press will run it. You can specify device and media, resolution, linescreen, trap amounts, linearization, dot gain compensation, color profiles and much more.

There are several options for sending jobs to OpenRIP: Print Queues appear on your network as network printers, so you can print to them as you would to any other printing device². With AdvancedScan, you can scan, edit and add paper-based originals³. You may also add PostScript, EPS, or PDF files, directly into OpenRIP with a PS Downloader, watched HotFolders, from CD ROM, or (using built in LPR support) print directly to OpenRIP via the Internet⁴.

Once a file is in a Print Queue, you can quickly edit and apply additional features⁵ for even more control of job setup and output.

Send a file to the wrong Print Queue? Simply Drag & Drop the file into another Print Queue to instantly change its output device.



Control Your Image Quality: OpenRIP's Linearization and dot gain compensation wizards take all the guesswork out of Imagemaster and press calibration.



Let OpenRIP® Do The Work!

OpenRIP improves productivity and reduces human error by taking over many of the more tedious and error-prone prepress tasks. OpenRIP automates screening settings, trapping, plate templating, imposition (including crop marks, registration marks, color bars, and page information) and application of linearization and dot gain compensation. Once you've set up standard settings in OpenRIP, every job goes through the same workflow process, ensuring consistency throughout the production cycle⁵.



Change output devices and resolution on the fly!



Select page orientation and image type, add crops, targets and color bars as they apply to each file and job type.



Choose Job Type, Screening Method, Frequency and Spot Shape.



OpenRIP's Monitor Preview⁶ (file preflight) lets you check page elements, traps, knockouts, overprints, imposition layouts and more. Check colors in composite (above) and separated modes (right). You can catch problems before you waste time and valuable media.



Create plate templates to match specific presses. Choose format, gripper, leading edge, trailing edge and plate lengths. Save common templates to use over and over.



Don't waste time trapping files in front-end applications. OpenRIP lets you quickly execute complex trapping commands directly from the RIP and check your trap settings with Monitor Preview (below).

