

President's Message:
▶ You Want It, You've Got It! - Pg 2

Feature Highlight:
▶ RIPit's New StripRITE Imposition - Pg 4

RIPit Institute of Tech:
▶ A RIP is a Terrible thing to Waste - Pg 5

RIPit Quick Tip:
▶ Become an OpenRIP Power User - Pg 6

RIPit Up

Volume Number Three
Issue Number One

The Official Productivity
Communication from
RIPit® Computer Corporation

The New OpenRIP®

Standard Training

RIPit® Computer Corporation
Phone: 916-962-7050
www.ripit.com

Adobe PostScript 3

© 1998-2003 RIPit Computer Corporation

RIPit® serves up a new improved OpenRIP® loaded with enhanced performance, features, and a smart user interface that offers powerful production solutions and a complete digital workflow. *Next Page*

Product Highlight:

The New OpenRIP®

RIPit® launches a new improved version of their software based Raster Image Processor line, OpenRIP® with performance enhancements and new features to make this build the most productive and user friendly interface for offset, narrow-web label and color production.

The new OpenRIP uses Adobe's New CPSI 3015 interpreter and includes native support for transparency, allowing you to take full advantage of that feature in the latest versions of Adobe applications as well as the new PDF1.4 workflow, which allows you to preview jobs on your workstation, and send proofs to customers electronically. While the new version of OpenRIP looks pretty similar to previous versions, there are a lot of changes "under the hood."

New Hardware Key (Dongle) Format

Our previous dongle format restricted the number of features we could create, so we've changed the format to remove that restriction. This means that in order to upgrade to the new version, you will need to have a dongle updater application (provided by us) which recodes your key. The new format will also allow you to try out certain individual features on a time-limited basis. Please don't try to update OpenRIP to the new version until you have the dongle updater, or OpenRIP will refuse to start.

New Interpreter

With the new version of OpenRIP, we have moved from Adobe's CPSI 3011 PostScript 3 interpreter to CPSI 3015. While both of these interpreters are officially PostScript 3, there are some improvements in the new version. It offers native support for PDF 1.4 including the transparency feature, so it is compatible with all PDF files created in Acrobat Distiller 5. In-RIP Trapping features some new options as well: you can select a minimum black trap width, you can select different shapes for joins and ends of trap regions, and you can choose whether or not trapping should occur between touching images. There have been some bug fixes related to screening, and we've improved compatibility with blends from Quark XPress and CorelDraw. And now OpenRIP is able to detect blank plates, including those from PDFs, and now those plates are not output by default.

StripRITE™ Imposition

The biggest change in the new version of OpenRIP is the addition of StripRITE Imposition. We felt that no imposition products on the market (including our own previous one) really took advantage of the tight integration which is possible between an imposition package and a RIP. Our new StripRITE Imposition was designed from scratch to be an integral part of OpenRIP,

More Next Page ►

New OpenRIP® Series Line-Up from RIPit



OpenRIP® Offset Edition



OpenRIP® Label-Flexo Edition



OpenRIP® Color Edition

President's Message



As you all may remember, I have been talking about In-RIP imposition for years and how great it would be to incorporate the technology into OpenRIP.

In 2001 we did just that, using an OEM version of postscript imposition. Visiting with many of you and getting comments and I might add, lots of great ideas, I could see that postscript imposition had too many limitations so I assigned our engineering team to incorporate many of these ideas into a raster-based imposition feature.

We now have StripRITE™ Imposition. It has the coolest tools I have seen in a long time. You may ask why raster based? The main reason is we now have no limits on what files can be imposed. We can combine Word with Publisher, with PageMaker, etc...etc. We can also combine colors or turn colors off.

StripRITE has all that you have asked for and then some. This product has taken many months to design and implement but I think once you see StripRITE in action you will be as excited as I am. What a great job our guys did on this product.

Wayne

Product Highlight:

continued

which makes it much easier to use and more flexible than stand-alone or plug-in imposition products. The "RITE" in StripRITE stands for Raster Imposition Technology Engine, and it refers to the fact that the imposition takes place on raster (RIPped) files rather than PostScript files, improving compatibility and reliability. Not only can StripRITE impose PS (composite and separated), EPS, PDF, and scanned jobs, but it can combine them all into a single imposed job.

StripRITE is available for \$500 to users of our PostScript Imposition feature, \$1000 for users who do not have an existing imposition feature, and \$2000 for users who require an image area greater than 20" x 20". **See page 4 for more information.**

Proofing

The new version of OpenRIP offers some improvements to KOOLKolor inkjet proofing. Users who are running build 47 will need to update their ICC Profiles for the new version, while users running build 63 can continue using their existing profiles. (Though accessing certain features will require downloading new profiles.)

Most noticeably, the screening speed has been substantially improved; in most cases, printing is four times faster on a typical job.

OpenRIP now supports the entire range of Epson plotters, including the Stylus Pro 7600, 9600, and 10600. When using UltraChrome inks, OpenRIP supports light black ink on the 7600 and 9600. We have also added support for

new resolutions on a variety of Epson printers, as well as bi-directional printing support. We have also added support for the HP DesignJet 5000 and 5500 plotters, and the very fast Canon ImagePROGRAF W2200 printer.

Other Changes

Here are some other areas we've been working on:

- Support for punches in a variety of imagesetters is now available from the user interface. Users of Agfa imagesetters with punches can now control them directly from within OpenRIP.
- TIFFout and PSout drivers are now available to the general public, which allows support for a variety of output devices which OpenRIP does not drive directly.
- In AdvancedScan, the Scan Correction Wizard allows you to correct scanner size distortions in software automatically.

On a similar note, the Image Resize feature lets you apply scaling in either direction and in different amounts.

- Selecting "Help" now launches Acrobat Reader, opening the user manual PDF.
- We now offer a PDF export feature, which allows you to preview ripped jobs as pdf files on your workstation – or send them to customers for remote proofing.

For more information regarding the new version of OpenRIP, contact the RIPit Tech Support department at 916-962-7050 from 8am to 5pm, Mon. - Fri., PST., or email: techsupport@ripit.com.



The New OpenRIP software is also available on CD!

RIPit[®] AdvancedScan[™]

Scan ▶ Edit ▶ Manipulate ▶ Colorize ▶ Step & Repeat ▶ and Plate It!

RIPit's New AdvancedScan[™] is a professional Scan to Plate and Image Manipulation software that turns your CtP System into a complete digital workflow.

Don't let paper based originals stop production again!



[888] 947-4748

Website: www.ripit.com

New Stand Alone Software



Wow! Finally!

Raster Imposition that's fast, reliable and easy to use!

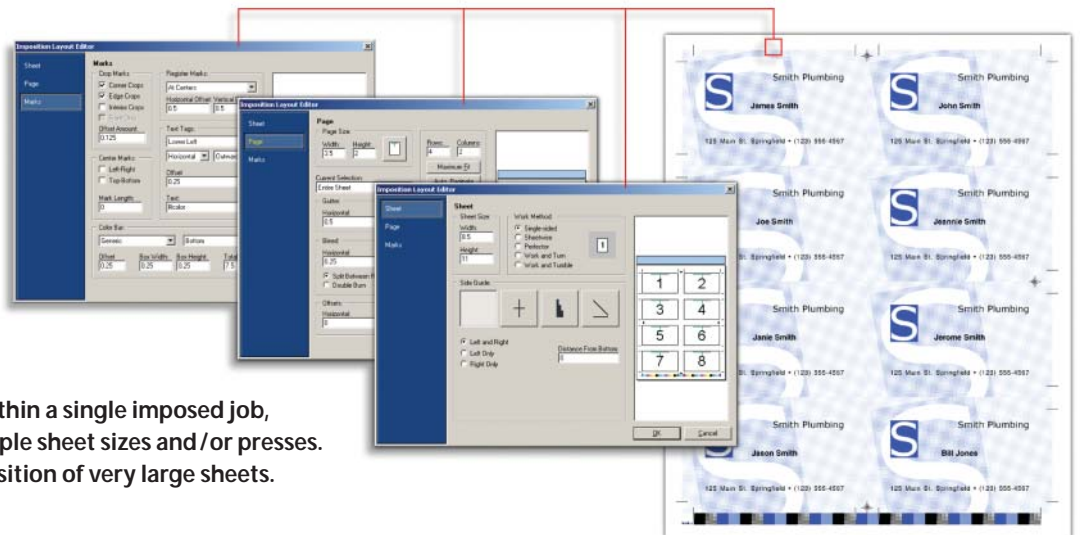
The new Raster Imposition Technology Engine (RITE) has been incorporated into OpenRIP to drive RIPit's new imposition feature StripRITE™. StripRITE allows you to generate spreads for books, step and repeat business cards, and perform other sophisticated imposition tasks quickly and easily.

StripRITE does not require special print settings or application filters. Now you can impose PDFs, PostScript (composite and separated), EPS files and scanned pages all in one document, without using arcane print settings. Because the imposition takes place after the file is interpreted, it's more reliable and straightforward than ever before. Best of all, it's remarkably easy to use – you can create templates and impose documents in minutes, rather than hours.

- ▶ Set page sizes and sheet sizes, gutters, bleeds and offset. Add crop marks, registration marks and color bars.

- ▶ Quickly Impose PS, EPS, PDF and Scanned pages in the master layout. Use perfect bound, saddle stitch or step & repeat bindery methods.

- ▶ Use of multiple plate templates within a single mark imposed job, so that the job can be run on multiple sheet sizes and /or presses. Unlimited size option allows imposition of very large sheets.

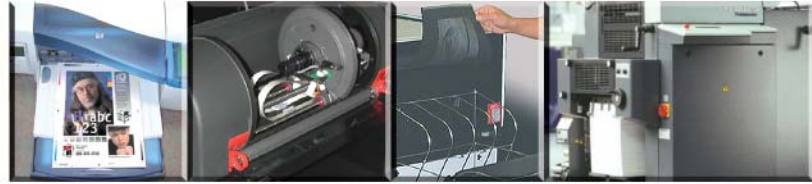


- ▶ Save created imposition layouts to use over and over again!



- ▶ Add or remove pages within or between files, double burn adjacent pages, even perform Late Binding, so you can start printing a large job before you have all the pages.

- ▶ Combine colors between different files and within the same file. You can even enable and disable individual colors within a single page.



RIPit Offers Intensive, Hands-On Training from Industry Professionals

The digital age has brought many changes to the printing industry affecting every department and aspect of business. The most noticeable change is the way we now accept materials to be reproduced from our customers. 90% of the work is digital, leaving those without output capabilities at the mercy of local service bureaus.

With the increased need for control and the development of Computer to Plate and Film Systems, has come the need for knowledge.

But simply buying a CtP or CtF System does not guarantee that your staff will use it to its full potential. Your production staff must have a

good grasp of front end applications, how to use the RIP's software (features) for better production (workflow). They must learn about color proofers, including proofing papers and profiles. They must understand how to operate and linearize an imagesetter, know what various plate and film medias are available, and learn about processor maintenance and realistic chemistry life.

For all the reasons above, RIPit has decided to fill this huge demand for knowledge with a unique hands on training that's geared for print professionals who operate, or would like to operate in-house CtP or CtF systems.



Courses are designed to teach the beginner and the intermediate student in a casual hands-on environment.

RIPit TC Courses will be offered in 2-Day Focus Seminars (see summer schedule below). For more information on RIPit Training Center's Summer Courses, contact Carey Gilpin at 916-962-7050, 8AM to 5PM, Monday thru Friday, PST.

Open registration for RIPit TC Summer Training has already begun and will run through June. Classes will be assembled on a first come basis. Schedules will be posted on our website by June 30th (go to www.ripit.com, RIPit North America, click RIPit TC Schedules). Classes start in July and run thru Sept.

OpenRIP Workflow - Power User Seminar

\$495.00 (per student)

2-Days

Prerequisites: Student should have a basic understanding of RIPs, Applications and Imaging equipment, beginners O.K.

Day One

Introduction to Computer to Plate - Approximately 1.5 Hours

- RIP, Proofer and Device Networking

Introduction to OpenRIP - Approximately 2.5 Hours

- Overview
- Features Summary

Lunch Break

OpenRIP Fundamentals - Approximately 2.0 Hours

- Ticket Editor
- Device and Queue Configuration
- Templating

Ticket Editor and Device Queue Lab - Approximately 1.0 Hours

Day Two

OpenRIP Advanced Features - Approximately 4.0 Hours

- In-RIP Trapping
- StripRITE Imposition
- Practical Linearization and Dot Gain Compensation
- AdvancedScan, Scan to Plate

Lunch Break

KOOLKolor Proofing - Approximately 2.0 Hours

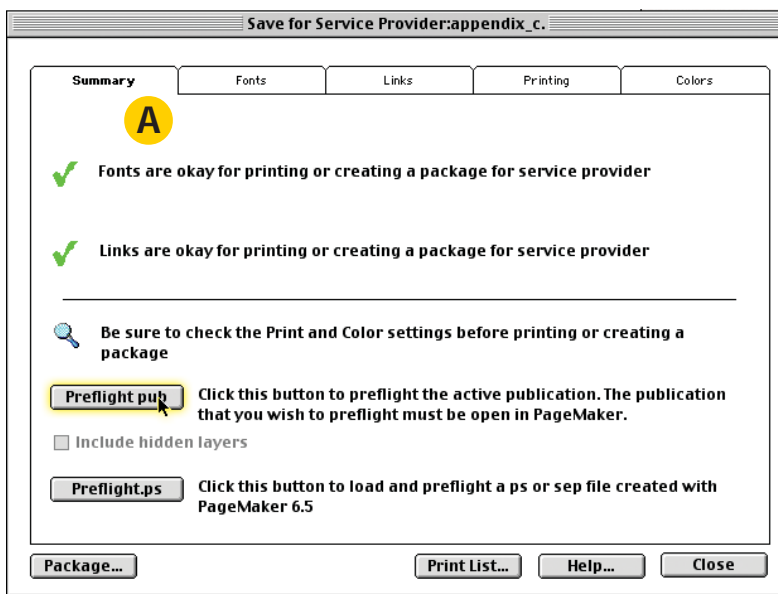
- Color Profiles, Media and real expectations
- Advanced Color Proofing and Press Proofs
- KoolToning, Halftone Simulation

Applications Lab - Approximately 1.0 Hours

Adobe® PageMaker

This is the beginning of a series of Quick Tips to help OpenRIP Users get the most out of their applications by avoiding unnecessary work and common pitfalls. In this edition, we'll be covering some common topics in Adobe PageMaker. The notes in this article apply to PageMaker versions 7.0 and 6.5. If you're using an earlier version, you won't be able to create In-RIP Separations, which is important if you want to use In-RIP Trapping with spot colors. It's always a good idea to have the latest bug fixes for applications, and PageMaker is no exception. To check what version of PageMaker you are running simply select Help (Windows), or Apple (Mac) > About PageMaker, to see your version number. The final version of PageMaker 6.5 is 6.52, and the current version of PageMaker 7 is 7.0.1. If you're not running either of those versions, you can download updaters from www.adobe.com.

A brief word about the Adobe Solution Network: Most OpenRIP customers are eligible to join the Adobe Solution Network program, and to become Authorized Service Providers. Joining the Authorized Service Provider program for \$595 a year entitles you to a copy of the latest versions of PageMaker, Illustrator, Photoshop, InDesign, Acrobat, and ATM Deluxe for **Windows and Macintosh**, updates to the latest product versions when they become available, 15 free tech support cases, and a variety of marketing opportunities. It's a great way to stay up to date with Adobe.



Customer Supplied Files

Customer-supplied files can be a major source of headaches for printers. Here are some tips to make sure customers supply you with clean files:

1) Ask them to supply you with printed separations from their laser printer. If they can't print proper separations, odds are that you won't be able to either.

2) Ask them to perform a preflight. Select Utilities > Plug-ins > **Save For Service Provider** **A** from that window, press the "Preflight pub" button. If there are any font or link problems, they'll know immediately. It will also show if the customer has inadvertently used RGB images in the job. Some printers ask their users to click "Print" after performing the preflight, and bring the printed report with them.

3) Use "Package" in the Save For Service Provider window. That will collect all links and fonts used in the document in a single place, so you'll have everything you need. It's much faster, and more reliable, than manually locating all the required elements for a job.

Trapping and Overprinting

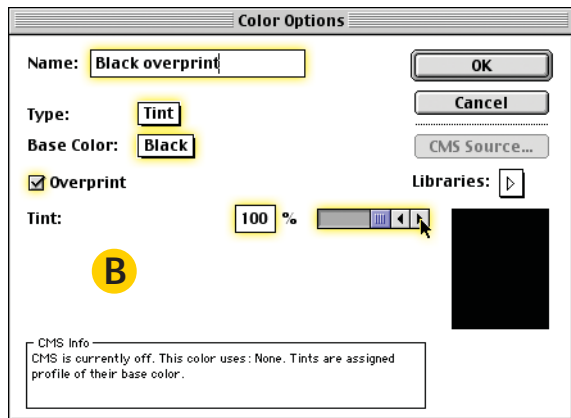
If you have In-RIP Trapping on your OpenRIP system, it's usually an advantage to use it instead of PageMaker's built-in trapping features. The primary reason is that In-RIP Trapping can trap objects which you've placed in PageMaker to native elements - PageMaker's trapping can't do that. If you have placed trapped files such as Illustrator EPS files within PageMaker, and then RIP the file with In-RIP Trapping turned on, OpenRIP generally will not touch anything that has already been trapped. (We have seen placed EPS files which used unorthodox trapping methods, behave strangely when In-RIP Trapping is turned on but that's uncommon.)

Users sometimes confuse overprinting with trapping. While they're related to one another, it's important to note that anything which you set to overprint in PageMaker (or any application for that matter) will not be touched by In-RIP Trapping. Likewise, In-RIP Trapping cannot cause an item to overprint if it was not set to do so in the application (though a very large choke can make it appear to do that). If you want something to overprint, you must set it up to do that within PageMaker. For black ink, you have some control over that in PageMaker's Trapping Preferences window, under **"Black attributes"** **B** (see figure B on next page)

More Next Page ►

Quick Tip: OpenRIP Power User

continued



Want to make some elements of a color overprint, while others knock out? Here's a trick. By default, when you create a color, it does not overprint. To create an overprinting version of the color, highlight the color and select "Duplicate" from the arrow menu at the top of the Colors palette. The Color Options window opens up showing a copy of the color you selected. You might want to change the name to something like "Purple Overprint", or whatever matches the name of the original color. From the Type pulldown, select "Tint". From the Base Color pulldown, be sure that the appropriate color is selected. Check the Overprint box, and make sure that the tint value is set to 100%. Click OK when done. Whenever you want an element of that color to overprint, use the tint which you created. When you print the file, both the non-overprinting version of the color and the overprinting version will come out as a single separation.

Sending a PageMaker File to OpenRIP.

There are several ways to output a PageMaker file to OpenRIP. You can use the Print Dialog box to create a PostScript or EPS file which you can later add to a queue in OpenRIP. PageMaker also allows you to generate PDF files, and OpenRIP can interpret those files natively. But by far, the most common way to send a PageMaker file to OpenRIP is simply to print it to the RIP. This section helps you choose the best options when you print to OpenRIP.

If you are printing from a Mac, you must first go to the chooser and select the OpenRIP print queue where you want to send the job. We recommend using either the LaserWriter or AdobePS drivers - PSpriinter is an older driver which generally works, but treat it as a culprit if you have PostScript errors or other printing problems. It's usually best to use the most recent version of LaserWriter or AdobePS which is compatible with the version of MacOS you're using. On a Windows system, you can select the queue from within the Print Dialog box, though you will have had to set it up previously. As with the Mac, if you're using an Adobe-supplied PostScript driver, it's a good idea to keep it up to date.

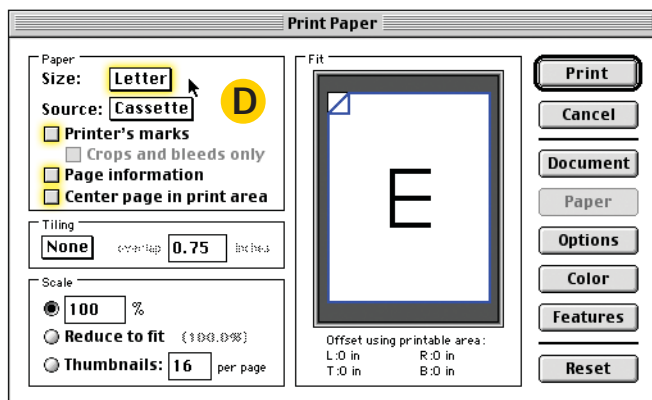
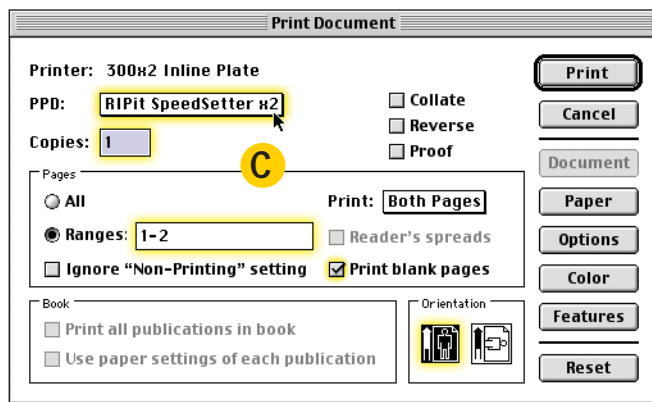
Printing directly out of PageMaker.

Select **File > Print to open the Print Dialog Box** **C**. If you're in Windows, select the appropriate queue from the Printer pulldown menu. Select a RIPit-supplied PPD from the PPD pulldown menu. If you don't see one there, you can add it manually. Under Windows, you can place RIPit PPDs (available on the OpenRIP installation CD) in the PM65\RSRC\USENGLSH\PPD4 folder. (The location of the PM65 folder may vary from one machine to another.) On the Mac, they should be placed in the System Folder: Extensions: Printer Descriptions folder. You may need to restart PageMaker to see them.

Copies should typically be set to 1, and Collate, Reverse, and Proof should usually be deselected. If you are printing a job which will be imposed, and which contains intentionally blank pages, check "Print blank pages" so that the page sequence remains intact. If you're using imposition, be sure that Orientation is set to Portrait, the left choice, or the page image will be placed sideways on the sheet.

For jobs in which you don't use imposition, selecting Portrait may also be useful. For example, if you're printing envelopes which are wider than they are tall, choosing Portrait will ensure that the return address is aligned against the gripper edge rather than out in the middle of the plate.

In the **Print Paper** section **D**, select the appropriate paper size for your job. If your job is wider than tall and you selected Portrait in the Document section of the print dialog box, you may need to manually enter a custom page size - the width should be the larger of the two dimensions, and Page orientation should be normal (If the PPD prevents you from entering a width which is wide enough for the job, try using the Generic PPD, found on the OpenRIP Install CD, which allows larger page dimensions.) Set the rest of the options in the Paper section as appropriate, though if you are imposing the job at the RIP, it's best to



More Next Page >

Quick Tip: OpenRIP Power User

continued

leave the various page marks turned off and add them during imposition. While it's best to print a job on a paper size which matches the final trimmed size for the job, you can also use a larger page size if you're imposing the job, so long as the image is centered in the page.

In the Options section E, we recommend selecting "Normal" from the Send image data pulldown menu, as "Optimized subsampling" may reduce image quality under some conditions. For Data encoding, selecting "binary" (if it's available) may improve printing speed. For Download fonts, select "PostScript and TrueType". If you're using PostScript-based imposition, select Page independence. If you're using StripRITE or no imposition, leave it deselected to improve printing speed.

In the Color section F, you can select how to print the file to OpenRIP. There are four choices:

Composite - Color: This is one option if you're printing a process color job and you want to use a composite workflow, such as for In-RIP Trapping. In OpenRIP, the Job Type should be set to "Color Composite".

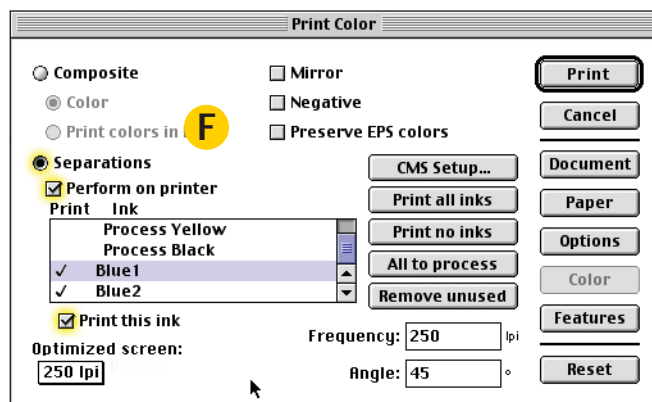
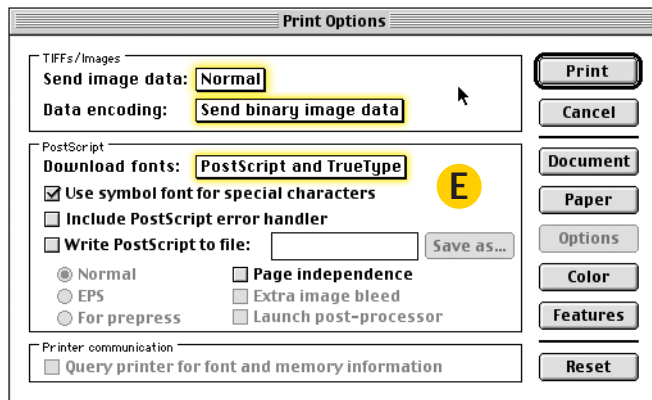
Composite - Print colors in black: Use this option if you have a multi-color PageMaker job which you want to print in one color. In OpenRIP, select a Job Type of "Mono/Separated (Autodetect)", to print the job in black, or use "Mono/Separated" and edit the color list to use the desired color.

Separations: Use this option if you have a one or more color job and want to print it using a normal separated workflow, without In-RIP Trapping. If your job contains placed DCS files, you must use this choice. In OpenRIP, select a Job Type of "Mono/Separated", and turn on Scan for Colors.

Separations - Perform on Printer: Use this option to print a process color, spot color, or process plus spot job, and you want to use In-RIP Trapping. In OpenRIP, select a Job Type of "Color Composite", and turn on Scan for Colors.

By default, OpenRIP will ignore the frequency and angle settings you select in this and any other print dialog box. You can force OpenRIP to honor the settings by selecting "Use screen settings from job" in the Color Screening section of OpenRIP's Ticket Editor.

When you're ready to RIP, click Print.



Bonus Tip: Bringing Damaged Files Back from the Dead

PageMaker files seem to be especially easy to corrupt. Fortunately, there are some ways to save all or part of your work even if a file is misbehaving -- or worse, if it is crashing PageMaker. As long as you can open the file successfully, there are a few steps you can take. Before you take any of the following steps, make a backup or two of your damaged PageMaker file.

Step 1) Immediately after opening a file, select Save As..., and save the file under another name. When you save a document normally, PageMaker often updates the saved file rather than saving it from scratch. When you use Save As..., PageMaker is forced to save an entirely new copy of the file, which can resolve certain problems. Close the original file and open the re-saved version, and try working with it.

Step 2) Perform a Diagnostic Recompose. On PageMaker for Windows, hold down the <Shift> key and select Type > Hyphenation. Rather than opening the hyphenation window, PageMaker will internally re-link parts of the document. On a Mac, hold down the <Option> key while selecting Type > Hyphenation. Then, do a Save As..., close the original, and work with the new one.

Step 3) On a multi-page document, you can fix some problems by re-ordering pages. Select Layout > Sort Pages..., and in the Sort Pages window, drag the last page in the document to before the first page. Click OK. Then, reopen the Sort Pages window, and drag the first page back to the end of the document, and hit OK. Then, do a Save As..., close the original, and work with the new one.

Step 4) As a last ditch effort, create a new blank document, and copy the contents of existing pages to the new document, page by page. Even if you are not able to save the entire document, you may be able to salvage parts of it. This may also help you figure out if a particular page is causing the problems you're having. And as always, use Save As...



Feature Story: Press Tips: Getting Poly to Fly

Product Highlight: AdvancedScan - Scan to Plate

Word from the Purd: How you Work IS YOUR BUSINESS

Quick Tip: Handling the little Quarks in QuarkXPress