

Throw away that old Analog Plate Camera!

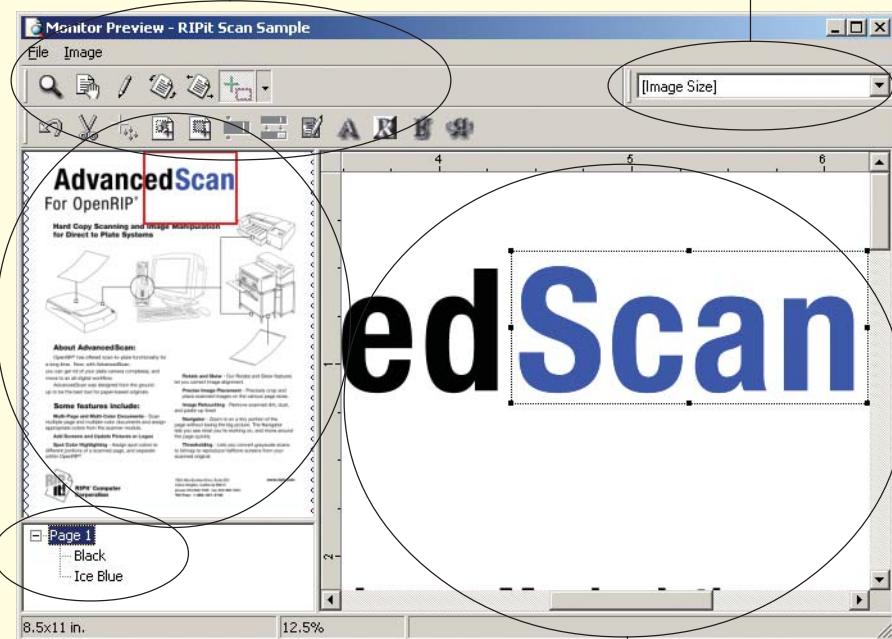
RIPit's new easy to use AdvancedScan™ gives you a complete digital workflow!

**Navigator**  
Find your way around the page quickly

**Page Picker**  
Choose pages and view, change, or remove colors

**Tools**  
Let you touchup and modify your scanned document

**Page Size**  
Set the finished page size for the image



**Editing Window**  
View the page close-up and make changes

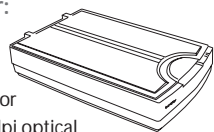
### Minimum System Requirements for AdvancedScan™ Software

#### Recommended Hardware:

- Pentium III - 800MHz minimum, Pentium 4 Processor recommended
- 5 GB available drive space
- 128 MB RAM minimum, 256MB recommended
- Windows™ NT/2000/XP
- 24bpp, 1024 x 768 or higher recommended
- Network card for transmitting jobs to a RIP
- One available PCI slot for included Firewire card or available Firewire or SCSI connector

#### Recommended Scanner:

- Microtek ScanMaker® 9800XL**
- Bit Depth: True 48-bit Color
  - Resolution: 3200 x 1600 dpi optical
  - Scan Area: 12" x 17" (Tabloid Size)
  - Interface Type: FireWire, SCSI II and USB
  - Scan Wizard for OpenRIP (only available from RIPit)



**RIPit® Computer Corporation**  
7920 Alta Sunrise Drive, Suite 250  
Citrus Heights, California 95610  
916-962-7050 Fax: 916-962-7053  
www.ripit.com

### AdvancedScan™ Software as add-on to OpenRIP®



#### OpenRIP (RIP) Hardware:

- Pentium 4 Processor
- 40+ Gig Hard Drive, 256 MB Ram
- Windows 2000® Professional
- Integrated video, audio, 10/100 Ethernet
- RIPit PCI Imagesetter Interface Card & Cable
- CD-RW and 3.5" floppy drive
- 17" monitor, mouse, and keyboard

#### OpenRIP Network:

- Queues appear as printers in the Chooser (Mac)
- Download PS fonts and files, EPS & PDF files
- Works with Windows® 95/98/NT/ME/2000/XP compliant printer
- HotFolders feature for Windows and Mac OS X workstations

#### OpenRIP System Features:

- True Adobe® PostScript® 3™ Interpreter
- Direct PostScript, EPS, and PDF printing
- Page information, crop marks, targets, and color bar controls
- Custom Job Queuing, with drag & drop
- 136 Adobe® PostScript® 3™ Standard Fonts
- RIPit KOOLKolor™ Inkjet Proofing System
- AdvancedScan™ (see inside right for details)

#### OpenRIP Proofing Features:

- Monitor Preview, with Trap Preview feature
- Supports monochrome, process color, and spot color files
- Advanced Proofing Features: Change spot colors on the printed proof; Print any combination of job colors; Reduce ink on any or all colors

#### OpenRIP Power Options:

- Adobe® In-RIP Trapping
- StripRITE™ Raster Imposition
- Custom Plate Templates
- RIPit KoolToning™ Inkjet Halftone Simulator
- Color Plotter Support
- HP 5100 Laserjet (platemaker)

# AdvancedScan™ by RIPit®

Scan to Plate and Image Manipulation for Digital Plate & Film Production



**RIPit® Computer Corporation**

© 1993-2003 RIPit Corporation. All rights reserved. RIPit, the RIPit logo, OpenRIP, SpeedSetter, KOOLKolor, KoolToning StripRITE and AdvancedScan are trademarks of RIPit® Computer Corporation. Agfa and Balanced Screening is licensed from Agfa Corporation. Adobe, Postscript 3, and Accurate Screens are registered trademarks of Adobe Systems. Epson is a registered trademark of Epson Corp. Windows 2000 Professional is a registered trademark of Microsoft Corp. Intel Pentium is a registered trademark of Intel Corporation. ScanMaker 9800XL is a registered trademark of Microtek. All other company and product names are trademarks or registered trademarks of their respective owners. Prices and Equipment Specifications subject to change without notice. All hardware carries a limited warranty. OpenRIP 2000 software carries a 90 day warranty with optional extended support contracts for both.

# About AdvancedScan™

With **AdvancedScan™**, you can get rid of your plate camera completely, and move to an all-digital workflow. AdvancedScan™ was designed from the ground up as the ideal digital tool for paper-based originals. And now, it's available both as a stand-alone product, and as an integrated component of OpenRIP Offset Edition.

Scan the page with our recommended tabloid scanner, or any high quality TWAIN-compliant scanner. Then, open it in AdvancedScan and make any necessary changes or corrections for output. You can correct for page rotation and skew, touch up dirt and other image anomalies, crop the image and position it on the page size of your choice. Need to drop in a new photo? **No problem.** Clean up text? **Simple.** Create a colored box with screens? **Easy.**


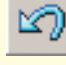
When you're done, export it as a high or low-resolution PDF to e-mail to a customer for proofing. Or export it as an EPS, TIFF or PS file which you can use elsewhere. Or drop it in a print queue to your supported output device. Need to Step & Repeat your image? **Go ahead.** Multi-page, multi-color jobs? **Yep.** And you can save your edited file to use over again, so you won't have to re-scan, or re-edit.

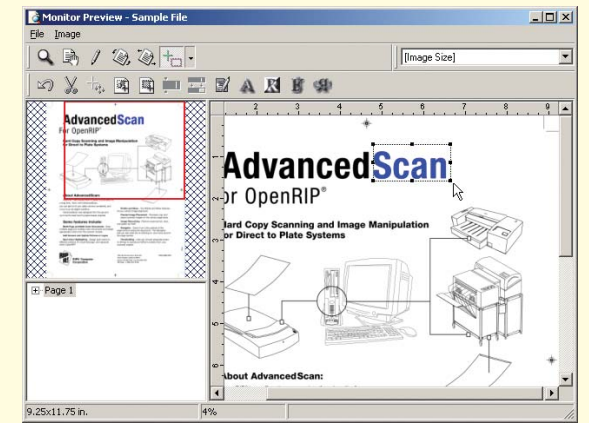


## Here's a scenario:

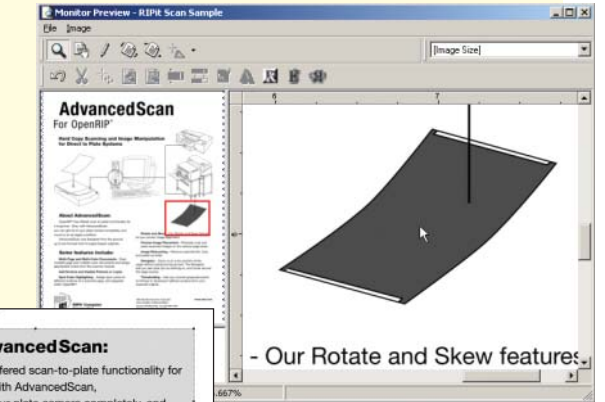
A **new customer** comes and wants reprints of his two-color business cards. His original is... a dingy two color business card, his last one. And it needs to be on the press in an hour so he can pick it up tomorrow morning on his way to a conference. Easy. Drop the card on your scanner and scan it. Open it up in **AdvancedScan™**, rotate, crop, and position it. Clean it up, and apply spot colors where you need them. Step and repeat so that it's 4-up. Add it to a queue, output the plates, and run the job!

## AdvancedScan™ Features:

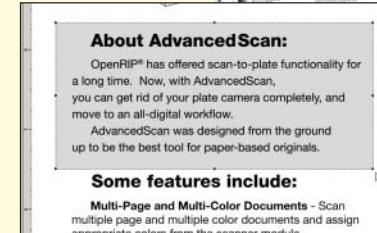
-  **Zoom Tool:** Move in and out of the image.
-  **Position Tool:** Position the image on the page size of your choice.
-  **Touchup Tool:** Remove items you don't want to print.
-  **Rotation and Shear Tools:** Rotate image and correct for skew.
-  **Region Tools:** Select the area to modify.
  -  Rectangle
  -  Rounded Rectangle
  -  Ellipse
  -  Polygon
-  **Undo:** Cancels the most recent action.
-  **Invert Image Tool:** With a backlit scanner, you can scan film too.
-  **Flip Tools:** Re-orient the image.
-  **Step & Repeat Tool:** Quickly Step & Repeat the image and add printer's marks.
-  **Resize Tool:** Correct for Optical Distortion in the scanner.
-  **Image Cropping Tool:** Select the portion of the image you want to use.
-  **Colorizer Tool:** Apply color to page elements.
-  **Place Image Tool:** Add a photo, or a region from another scanned job.
-  **Tint Area Tool:** Apply a background color to a region.
-  **Set Black/White Point:** Choose the tonal range of the page.
-  **Threshold Tool:** Convert grayscale to bitmap, controlling the cutoff point.
-  **Dirt Removal Tool:** Automatically delete specks and small image anomalies.
-  **Text Cleaner Tool:** Clean up jagged edges in scanned text.
-  **Eraser Tool:** Erase the selected area of an image.



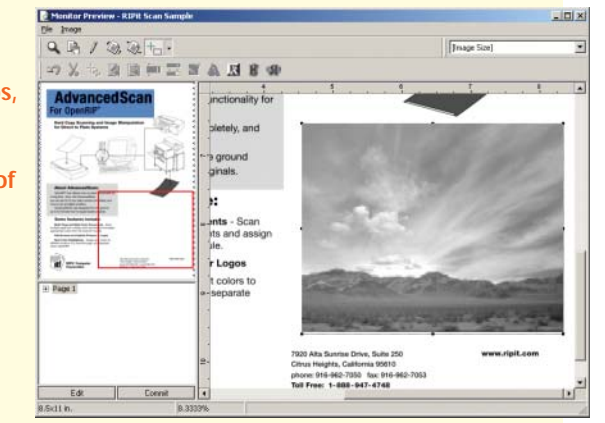
Select text to screen or colorize.



Add screens and colors to objects or as fields behind text.



Place photos, logos and clip art in any region of a page.



Save and archive scanned files as...  
 - PS  
 - EPS  
 - TIFF  
 - PDF

or...  
 Save files as low res PDF for email proofing!

