

Monitor Preview ⁵

OpenRIP's monitor preview lets you check every detail of a digital file before you print a proof! Check a file's links, fonts, traps, step & repeat settings, bleeds, bearer bars, registration marks, color separations and more. Monitor Preview lets you view files in color composite or as separations (*below and right*), so you can catch a variety of common file problems before you output the job.



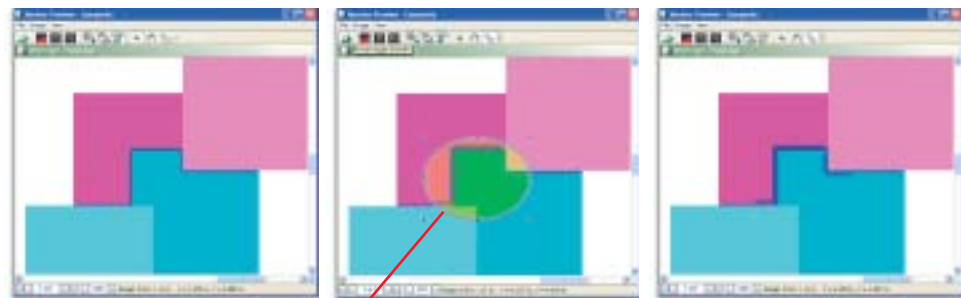
New RasterView ⁶

RasterView lets you examine a ripped file at the pixel level, view trapping, check screen angles, frequencies, and tint values, calculate ink densities and generate ink key settings for your press, either manually or using the CIP3 export feature.



New In-RIP Trapping with TrapZone ¹⁻³

OpenRIP Flexo honors trap settings, which you create within your front-end applications, but many trapping tasks can be done more quickly and easily with Adobe In-RIP Trapping (below left). RIPit's New TrapZone feature enhances Adobe In-RIP Trapping by letting you select separate trap settings for different parts of a page (below center). You can define zones while viewing the rasterized image, and immediately re-RIP the file to see the effects of your settings (*below right*). Use Monitor Preview or RasterView to check file traps.



TrapZone allows you to select desired Zones with rectangle, elliptical or polygon tool and apply more or less trap to the selected areas.



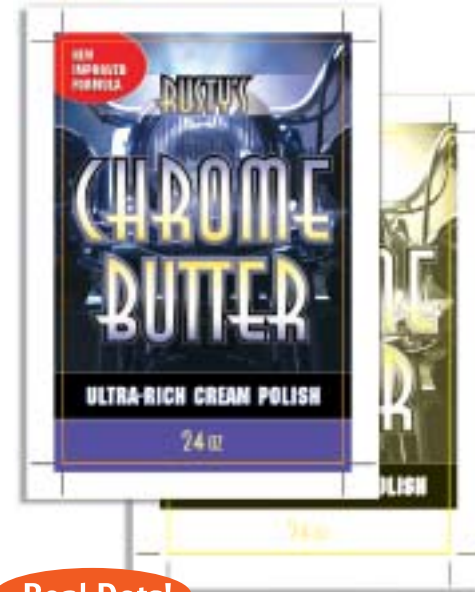
RIPit North America
7920 Alta Sunrise Dr., Ste. 250, Citrus Heights, CA 95610
Sales: 888-947-4748 email: flexo@ripit.com
Technical Support: 916-962-7050 Fax: 916-962-7053
www.ripit.com

RIPit Europe AB
Hulukvarnsgatan 8, SE-553 11, Jönköping, Sweden
Sales / Support: +46-36-35 47 90 Fax: +46-36-16 01 05
email: labelrip@ripit.com

© 1993-2004 RIPit Corporation. All rights reserved. OpenRIP, RIPit, the RIPit logo, SpeedSetter, KOOLKolor, KoolToning, OpenRIP Remote, PerfectBLEND™ Flexo, SmartDie are trademarks of RIPit® Computer Corporation. Agfa and Balanced Screening are registered trademarks of Agfa Corporation. Adobe, PostScript 3, and Accurate Screens are registered trademarks of Adobe Systems. Windows XP Professional is a registered trademark of Microsoft Corp. Intel Pentium is a registered trademark of Intel Corporation. Macintosh and MacOS X are registered trademarks of Apple Computers. All other company and product names are trademarks or registered trademarks of their respective owners. Prices and Equipment Specifications subject to change without notice. All hardware carries a limited warranty. OpenRIP Flexo software carries a 90 day warranty with optional extended support contracts for both.

KOOLKolor™ Proofing ⁷

RIPit's KOOLKolor Proofing technology lets you create color-accurate proofs from a variety of inkjet printers and plotters. Use RIPit's Advanced Proofing feature to print any combination of colors (both CMYK and Spot). You can edit file colors, combine colors, and provide customer proofs that are closer to the finished piece.



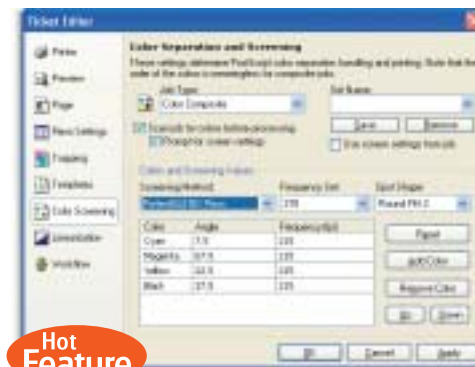
Real Dots!



RIPit's KoolToning™
KoolToning halftone simulator provides traditional halftone dots on CMYK and Spot Color proofs.

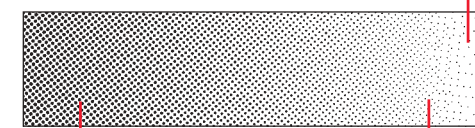
Screening Methods ¹⁻³

OpenRIP Flexo offers a variety of screening solutions specifically for flexo including: Adobe® Accurate Screens, Agfa® Balanced Screening (with flexo angles and true round dots) and RIPit's New PerfectBLEND™ Flexo hybrid screening technology. PerfectBLEND Flexo combines the benefits of AM Screening and FM Screening for higher linescreens and printable vignettes that get you closer to 0% while maintaining a rosette.



Hot Feature

PerfectBLEND™ Flexo FM Screening



AM Screening

PerfectBlend

OpenRIP® Flexo

Intelligent Workflow for Flexo Prepress



OpenRIP® Flexo: Complete Prepress Automation

OpenRIP® Flexo offers an Award Winning Adobe® PostScript® 3™ Workflow designed specifically for flexographic prepress environments. This unique RIP is the result of many years of experience in the flexo printing industry and is the latest refinement of a workflow concept that was first brought to the flexo market in 1994.

OpenRIP Flexo's interface embodies our straightforward workflow philosophy: add the advanced features that our customers need, and make them easy to use. We have eliminated confusing and unnecessary steps that frustrate a prepress operator, while keeping the system completely customizable to meet any workflow needs.

OpenRIP Flexo is designed with an open structure and drives a wide variety of imagesetters, inkjet printers and plotters; and it offers TIFF-out and PS-out drivers with advanced Level 3 features for outputting to CtP and other devices.

Custom Print Queues: What, How, Where and When

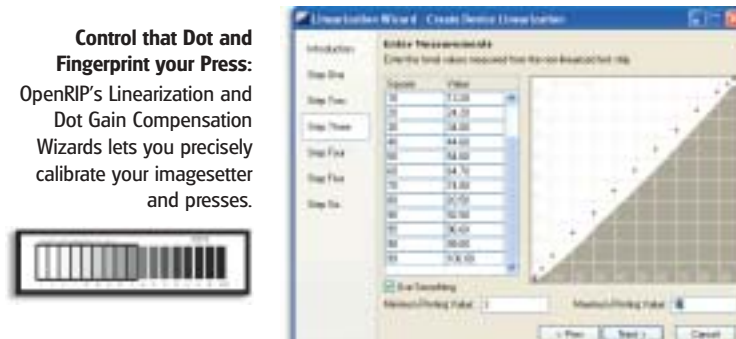
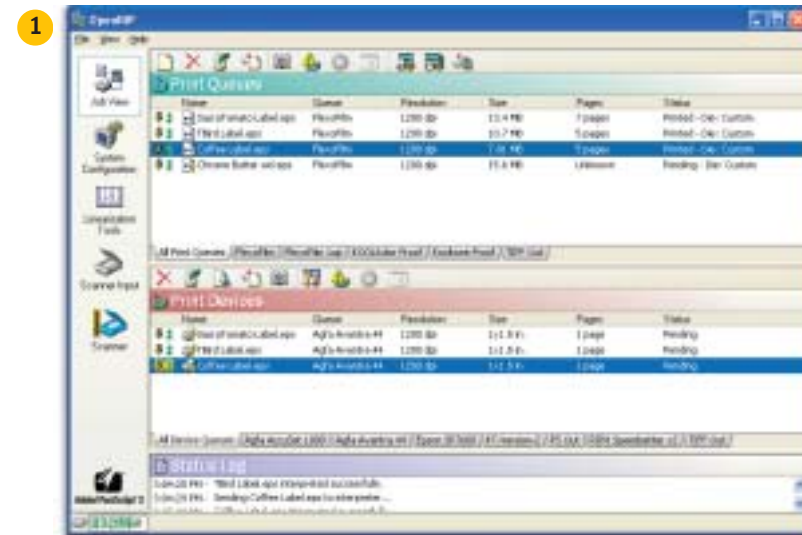
OpenRIP Flexo lets you customize your workflow by controlling output to match production needs through the use of custom Print Queues. Print Queues¹ let you choose where the file is going, how the job will run and what press will run it. You can specify device and media, resolution, linescreen, trap amounts, linearization, dot gain compensation, color profiles and more.

Options for sending jobs to OpenRIP Flexo:

Print Queues appear on your network as network printers, so you can print to them as you would to any other printing device. You may also add PostScript, EPS, or PDF files, directly into the desired Print Queues on OpenRIP by dragging and dropping files in and out of OpenRIP, into watched HotFolders, with a PS Downloader, from CD ROM, or (using the built in LPR support) print directly to OpenRIP Flexo via the Internet².

Once a file is in a Print Queue, you can quickly edit and apply additional features³ (trap amounts, adjust die template, etc...) for even more control of job setup and output.

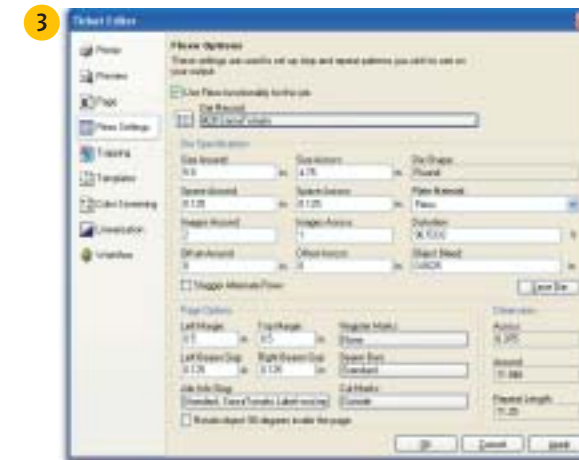
Send a file to the wrong Print Queue? Simply drag and drop the file into another Print Queue to instantly change its output device and setup parameters.



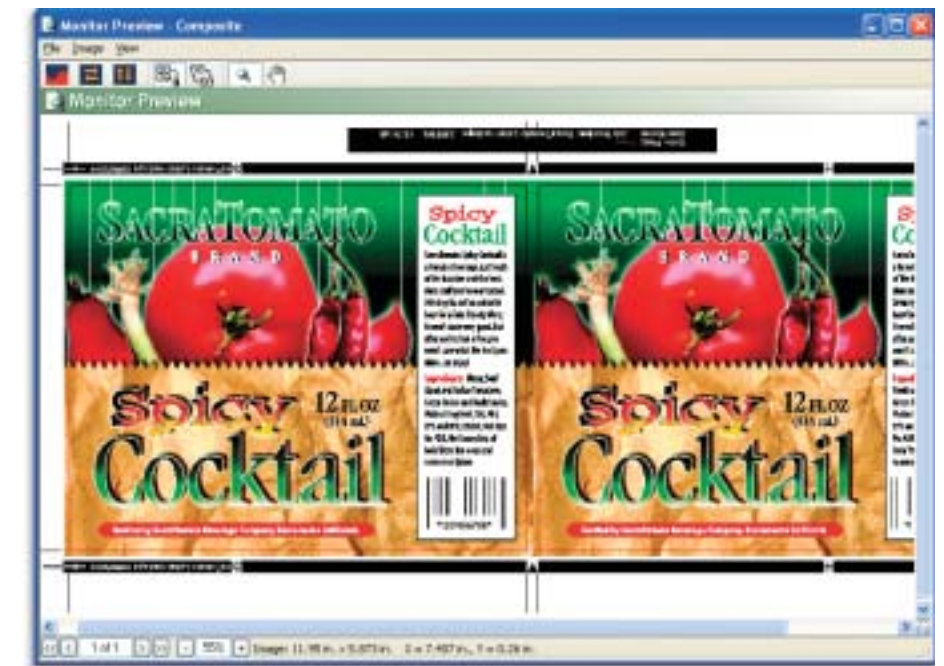
Control that Dot and Fingerprint your Press:
OpenRIP's Linearization and Dot Gain Compensation Wizards lets you precisely calibrate your imagesetter and presses.

Let OpenRIP® Flexo Do the Work!

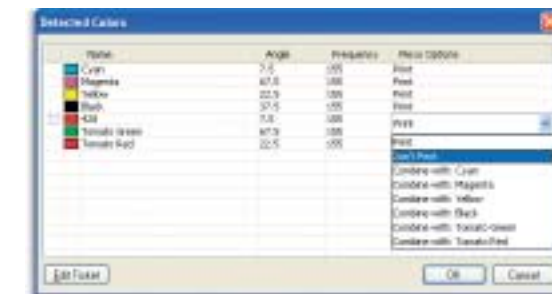
Prepress for Flexo has never been easier. OpenRIP Flexo handles all the repetitive and tedious work of preparing files for output. Let OpenRIP automatically apply step & repeat, distortion, bearer bars and traps to suit your production needs. OpenRIP lets prepress operators focus on preparing artwork in a simple one-up workflow to dramatically increase prepress production and accuracy³.



Centralized Die Database: OpenRIP Flexo allows you to create, edit and store custom die templates to suit an unlimited amount of production scenarios. You can specify die numbers, step & repeat settings, bearer bar and distortion factors (above). This Die Database allows users to quickly select the correct die for specific jobs, or use RIPit's SmartDie feature and let OpenRIP Flexo automatically apply the correct die for you.



RIPit's SmartDie™ feature for OpenRIP Flexo delivers complete workflow automation to dramatically increase shop production and prepress accuracy. Simply tag your digital files with a SmartDie number, OpenRIP Flexo recognizes the die number along with the file colors (below) and automatically applies the correct steps, gaps, bearer bars and distortion, instantly and accurately (above)⁴.



Edit File Colors: OpenRIP Flexo also allows to quickly edit a file's colors. You may change colors, combine colors or simply turn specific colors off.



The OpenRIP Flexo Workflow

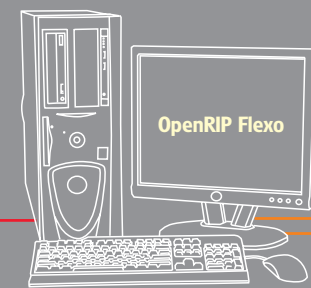
2 File Input Options: Send or Drag & Drop PS, PDF and EPS files into specific Print Queues on OpenRIP Flexo.

Print directly from networked Mac or Windows Workstations

Place PS, EPS and PDF Files into watched HotFolder on network

Via Internet

Import files into Print Queues from CD ROM



4 Centralized Die Database
Create, edit and store custom die templates with specific steps, gaps, bearer bars and distortion.

1 Create Custom Print Queues:
Setup Print Queues to suit presses and common work methods. Specify:

- Output device
- Resolution, Linescreen / Screen type
- Media, profiles, linearization and dot gain compensation
- Trapping and amounts

3 Files in Print Queues: Workflow Options

- Let SmartDie™ automatically apply the correct steps, gaps, bearer bars, distortion and traps.
- Manually edit file settings and die(s)
- Instantly change file setup / device: Drag & Drop to another Print Queue
- Go Monitor Preview

5 1st Level Proofing Monitor Preview:

- Check file content and color separations.
- File and Setup OK? RIP File.
- Not OK? Edit at OpenRIP or Workstation.

OpenRIP® Remote

Preview, output or email rasterized files, remotely from MacOS-X, UNIX and Windows workstations.

Rasterized Files in Device Queues

File output to various devices

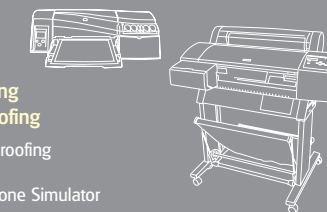
6 2nd Level Proofing RasterView:

Preview Rasterized File or email a softproof PDF or TIFF (ExportProof)

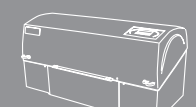
7 3rd Level Proofing KOOLKolor® Proofing

KOOLKolor inkjet proofing technology with KoolToning™ Halftone Simulator

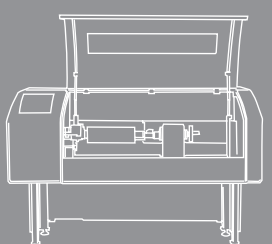
OpenRIP Flexo drives a variety of imagesetters, platesetters, digital copiers, laser printers, inkjet printers and plotters. Use TIFF-out and PS-out to drive your CtP System.



Imagesetters



Additional Output



TIFF OUT
PS OUT