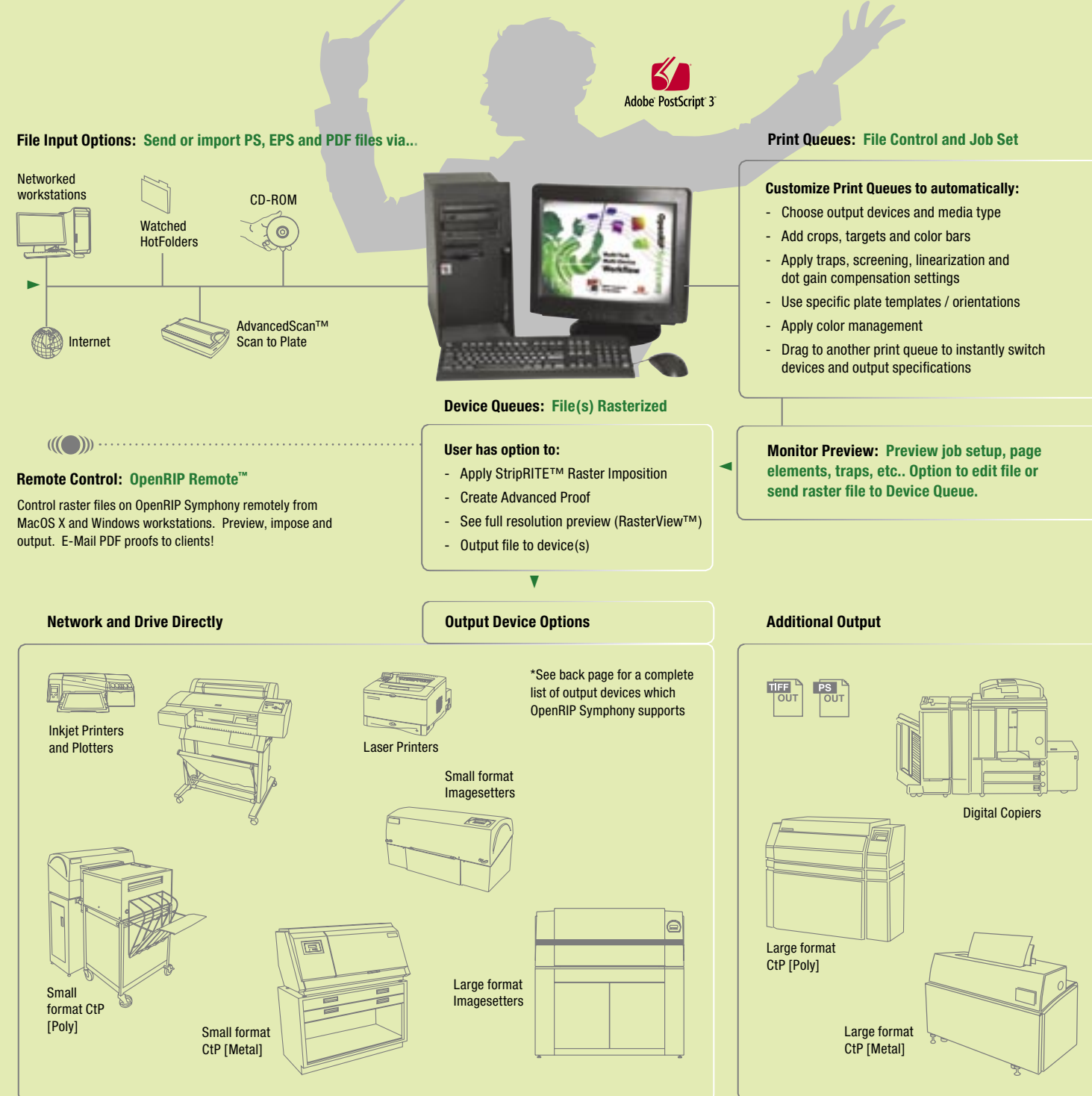


The OpenRIP[®] Symphony™ Solution

If your shop is typical, you have a wide variety of imaging devices including: color and monochrome copiers, laser printers, inkjet printers and plotters, CtP systems and imagesetters. Chances are, each one has its own RIP, and each RIP behaves a bit differently. Some will print just about anything well, some may excel at PostScript 3, PDFs, and transparency, while others can barely print a page of text correctly.

Wouldn't it be great if you knew for certain that you'd get exactly the same output from the same file, regardless of where you printed it? Wouldn't it be great if you had a single RIP to drive everything? Now you can, with OpenRIP Symphony.

OpenRIP Symphony is a state-of-the-art software RIP, which can control all the PostScript and TIFF-in* devices in your shop from a single interface. It uses the Adobe[®] PostScript[®] 3™ interpreter (CPSI 3016), for the highest level of compatibility with modern graphics applications. It can integrate scanning, trapping, proofing, and imposition into a single powerful package, and provides those features* to all of your output devices, regardless of age.



*NOTE: OpenRIP Symphony is a modular system designed to suit the needs of individual shops. Device drivers and optional features may entail an additional cost.

OpenRIP[®] Symphony™ Device Support and Output Options



OpenRIP[®] Symphony™ Core Specifications

OpenRIP (RIP) Hardware:

- Fast Pentium 4 Processor
- 40+ GB Hard Drive, 256 MB RAM
- Windows[®] XP Professional
- Integrated Video, Audio, 10/100 Ethernet
- RIPit PCI Imagesetter Interface Card & Cable
- CD-ROM and 3.5" Floppy Drive
- 17" Monitor, Mouse, and Keyboard

Network:

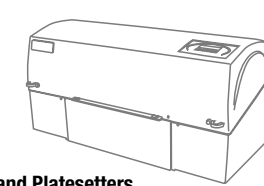
- Queues appear as printers in MacOS and Windows
- Download PS fonts and files, EPS & PDF files
- Works with Windows[®] 95/98/NT/ME/2000/XP
- Hot Folders feature for Windows and Mac OS X workstations
- LPR support for printing over the Internet

System Features:

- True Adobe[®] PostScript[®] 3™ Interpreter
- Monitor Preview, with Trap Preview feature
- Supports monochrome, process color, and spot color files
- Advanced Proofing Features: *Change spot colors on the printed proof; Print any combination of job colors; Reduce ink on any or all colors*
- Agfa[®] Balanced Screening
- Adobe Accurate Screens
- Imagesetter linearization and press dot gain compensation wizards
- Direct PostScript, EPS, and PDF printing
- Custom Plate Templates
- Page information, crop marks, targets, and color bar controls
- Custom Job Queuing (ticketing) with drag & drop
- PDF 1.5 Support
- PDF Preview
- Raster View, full output resolution preview with ink usage calculator and CIP3 support
- 136 Adobe[®] PostScript[®] 3™ Standard Fonts

Optional Features:

- Adobe[®] In-RIP Trapping
- StripRITE™ Imposition
- RIPit KOOLKolor™ Inkjet Proofing System
- RIPit KoolToning™ Inkjet Halftone Simulator
- AdvancedScan™ Scan to Plate
- PerfectBLEND™ Hybrid Screening Technology
- TIFF-out and PS-out Drivers
- OpenRIP Remote, Remote Workstation RIP Control
- Export Proof, save, preview and email raster files directly from OpenRIP.



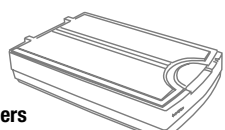
Imagesetters and Platesetters

- Agfa Accuset 800/1000/1200/1500
- Agfa Avantra 20/25/30/36/44
- Agfa StudioSet 2000
- Agfa Proset 9400/9550/9600/9800/9836
- Agfa SelectSet 5000/7000
- ECRM ScriptSetter VR30/36/45
- ECRM ScriptSetter ID36
- ECRM Mako 3625/3675/4625/4675/5625
- ECRM Mako 108HT
- ECRM Mako Oasis 3650/4650
- ECRM Marlin 2500/2500HS/3500
- ECRM Sting Ray Series
- ECRM Knockout 4550
- ExtraSetter 300, 300L
- ExtraSetter Express 300, 400
- ExtraSetter Maxima
- Excalibur (6-Up)
- Hell Bridgit (all models)
- Linotype Mark 10/20
- Linotype Mark 40EX
- Linotype 200/230/260
- Linotype 300/330/500/530/560
- SpeedSetter X1/X2/X6
- SpeedSetter 300L/300X2/400
- SpeedSetter VM
- Ultras 72P/72E
- Ultras 94P/94E
- Ultras Vision 300/400
- Ultras 3000/4000



Monochrome Printer / Platemaker

HP LaserJet 5000/5100



Scanners

Microtek 9800XL
or any TWAIN compliant scanner



RIPit North America
7920 Alta Sunrise Drive, Suite 250
Citrus Heights, CA 95610
Sales: 888-947-4748 email: sales@ripit.com
Support: 916-962-7050 Fax: 916-962-7053
www.ripit.com

RIPit Europe AB
Huluvärmsgatan 8, SE-553 11, Jönköping, Sweden
Sales / Support: + 46-36-35 47 90
Fax: + 46-36-35 47 91
email: eurosales@ripit.com



Color Inkjet Printers

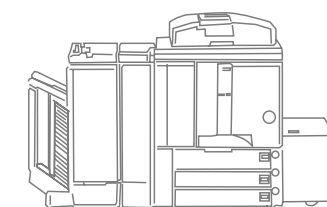
- Epson Stylus Color 1520/3000
- Epson Stylus Pro 4000/5000/5500
- Hewlett Packard DesignJet 10ps/20ps/30/50ps/120/130
- Canon BJC 8500, ImagePROGRAF W2200

Color Inkjet Plotters

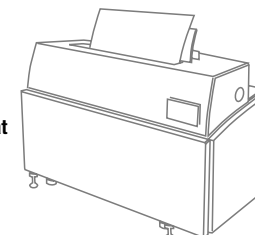
- Epson Stylus Pro 7000/7500/7600
- Epson Stylus Pro 9000/9500/9600
- Epson Stylus Pro 10000/10600
- Hewlett Packard DesignJet 2000/3000 Series
- Hewlett Packard DesignJet 5000/5500 Series
- Encad Chroma 24, Encad Novajet 1/2/3/4
- Encad Novajet Pro, ProE, Pro 50/500, Pro 600e/630/700
- Canon ImagePROGRAF W7200/W7250

Optional Output: File Format

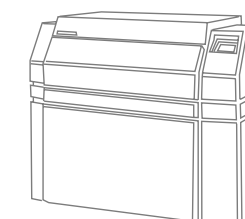
- TIFF-out (bitmap and contone)*
- PS-out (bitmap and contone)*



Digital Copiers



Large Format Metal CtP



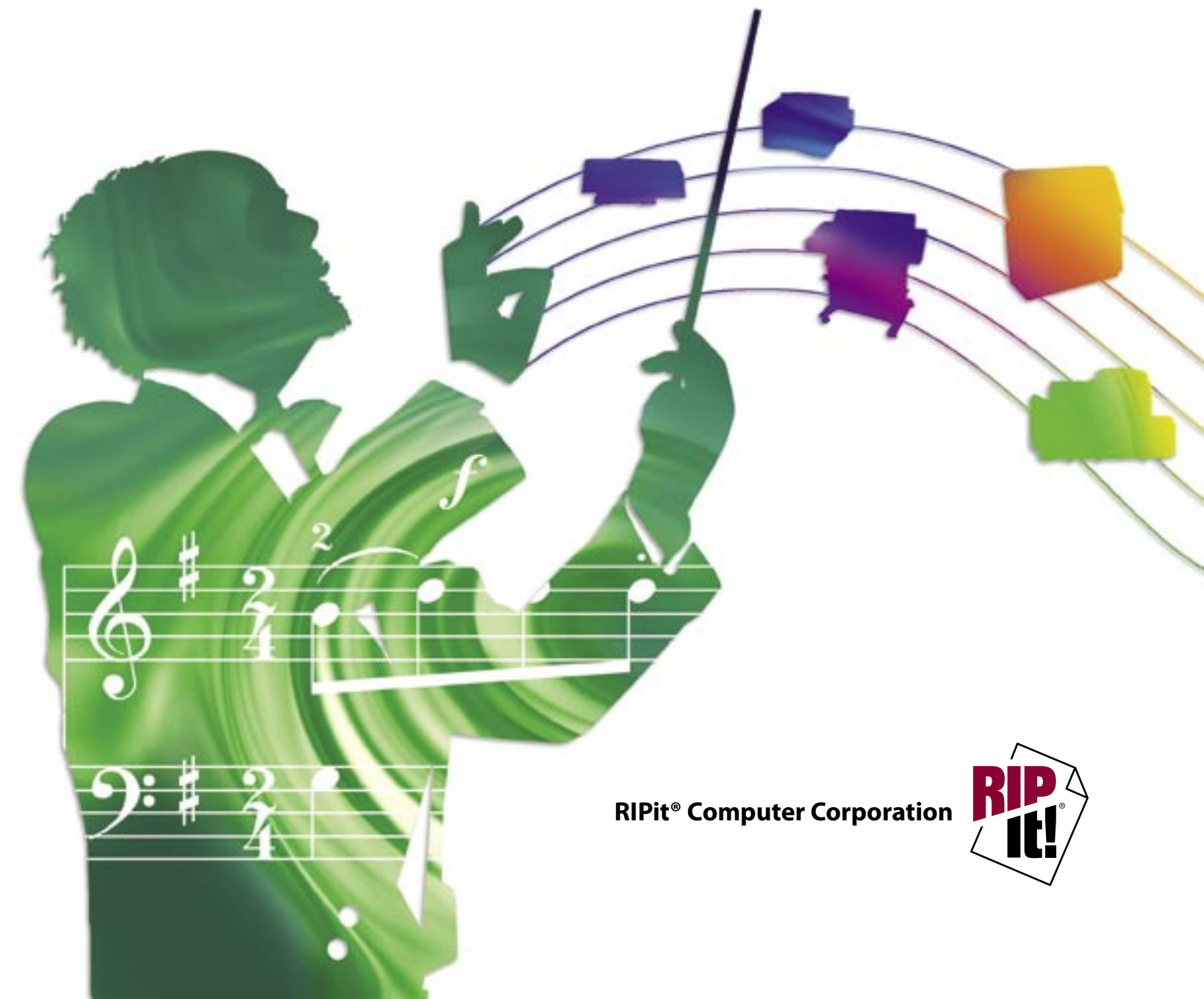
Large Format Poly CtP

OpenRIP[®] Symphony™

Award Winning + Multi-Task + Multi-Device Workflow



Adobe PostScript 3



RIPit[®] Computer Corporation



© 1993-2005 RIPit Corporation. All rights reserved. RIPit, the RIPit logo, OpenRIP, SpeedSetter, KOOLKolor Proofing, KoolToning, StripRITE, AdvancedScan, PerfectBLEND, RasterView and TrapZone are trademarks of RIPit[®] Computer Corporation. Balanced Screening is licensed from Agfa Corporation. Adobe, Postscript 3, and Accurate Screens are registered trademarks of Adobe Systems. Epson is a registered trademark of Epson Corp. Hewlett Packard DesignJet and LaserJet are registered trademarks of Hewlett Packard. Encad is a registered trademark of Encad Corp. Windows XP Professional is a registered trademark of Microsoft Corp. Intel Pentium is a registered trademark of Intel Corporation. Canon and ImagePROGRAF are registered trademarks of Canon, Inc. Macintosh and MacOS-X are registered trademarks of Apple Computers. All other company and product names are trademarks or registered trademarks of their respective owners. Prices and Equipment Specifications subject to change without notice. All hardware carries a limited warranty. Open-RIP software carries a 90 day warranty with optional extended support contracts for both.

+ Multi-Device + Multi-Task Workflow

OpenRIP® Symphony™ is a powerful Adobe® PostScript® 3™ RIP, offering an award winning workflow to drive a variety of output devices* including: imagesetters, platesetters, laser printers, copiers, inkjet printers and plotters. With a single, state-of-the-art RIP driving all the output devices in your shop, file output differences are a thing of the past. And OpenRIP Symphony's powerful scanning, trapping, screening, and imposition features* are available for all your output devices.

Imagesetters and Platesetters

You may have a perfectly good imagesetter or platesetter – perhaps you're still paying for it – connected to an obsolete RIP. If the manufacturer even offers a RIP upgrade, chances are it's pretty expensive. OpenRIP Symphony can provide all the new features you're looking for, controlling your imagesetter or platesetter through its existing RIP.

Inkjet Proofer and Plotters

Inkjet printers provide great image quality, but the RIPs which drive them may use non-standard interpreters, and they may render jobs differently than other RIPs in your shop. A proof is only useful if it's consistent with the printed piece. And with the expense of consumables and the time it takes to create a plot, you want it to be right. You may not need a separate inkjet RIP at all, since OpenRIP Symphony supports popular printers and plotters from HP, Epson, Encad, and Canon.

Laser Printers

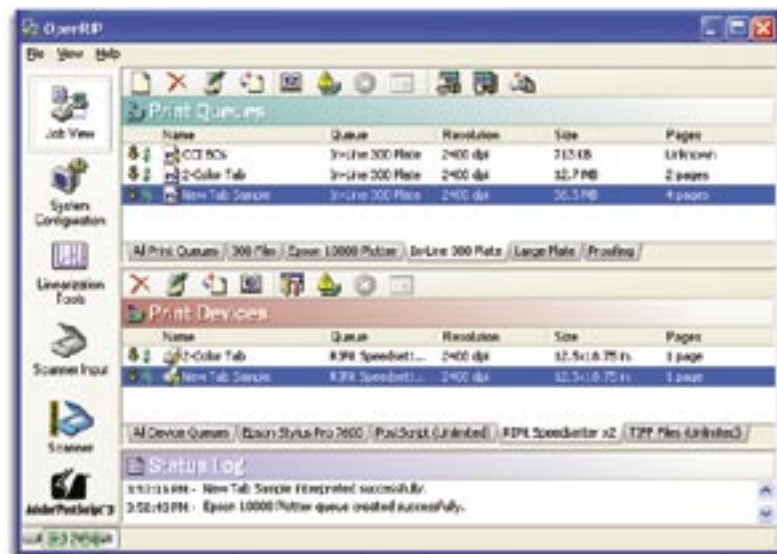
Do you have a laser printer in your graphics department which you use for quick proofs? The RIPs in small laser printers are usually designed more for economy than compatibility. They may not handle large images, complex graphics, or advanced PostScript features. With OpenRIP Symphony, you can still use the printer, but you'll know that what it prints out will match the plates you create later on.

Digital Copiers

Modern shops often have a digital color copier and a digital black and white copier. Larger shops may have several of each. It's often necessary to run jobs on more than one copier, running color pages on one machine and black-only pages on another. The elements which appear on all the pages — fonts, logos, graphics — need to be rendered the same regardless of where they were printed. With OpenRIP Symphony, you know everything will match because you're using the same RIP for the whole job.

Outsourced Printing

When you send work to a trade-only shop, you may not discover the differences in their RIP until you get the job back. Even if they comp the job, you've still lost time. With OpenRIP Symphony, you can send them a job which is pre-RIPped and even pre-screened. You'll know how the job will come back because you know how you sent it out.



Job View lets you see, at a glance, the status of all the files in OpenRIP Symphony. You can add new queues and devices, instantly redirect jobs from one device to another, set job options, and impose ripped files. The tabs under Print Queues represent different sets of job options which are applied to incoming jobs - each one shows up as a network print queue. The tabs under Print Devices are for the output devices which OpenRIP Symphony controls: CIP systems, inkjet printers, copiers, and other imaging devices.

Control your Workflow Remotely with OpenRIP Remote™



Using OpenRIP Remote*, you can preview, remove, impose, and output jobs from any Windows, MacOS X, or Unix workstation in your shop. OpenRIP Remote can also generate PDF proofs and e-mail them to clients.

*NOTE: OpenRIP Symphony is a modular system designed to suit the needs of individual shops. Device drivers and optional features may entail an additional cost.

+ Advanced File Control + Job Setup



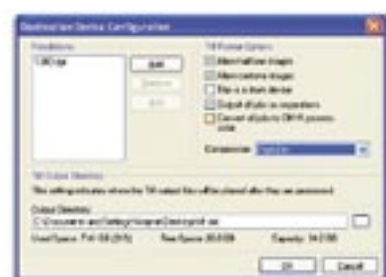
OpenRIP® Symphony™ improves productivity and reduces human error by automating the more tedious and error-prone prepress tasks. Symphony automates screening settings, trapping, plate templating, imposition (including crop marks, registration marks, color bars, and page information) and application of linearization and dot gain compensation. Once you've applied standard settings in OpenRIP Symphony, every job goes through the same workflow process, ensuring consistency throughout the production cycle.



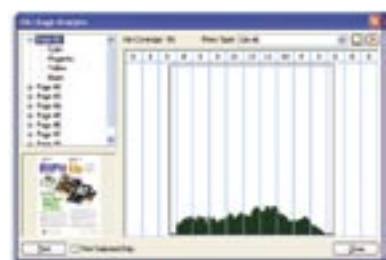
You can change resolution and a number of other settings, and even the output device, after you've sent the file to OpenRIP Symphony.



The PS-out driver* creates PostScript files that contain pre-ripped images - so your files look the same regardless of where you print them.



The TIFF-out driver* creates images which are precisely tailored to the output devices that accept TIFF files.



OpenRIP Symphony can calculate ink usage and settings for standard presses.



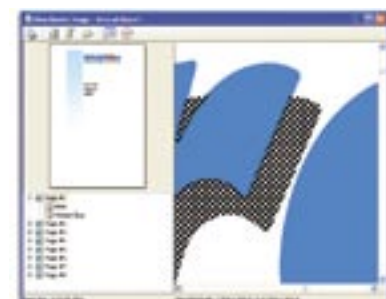
OpenRIP Symphony's Monitor Preview lets you check page elements, traps, knockouts, overprints, imposition layouts and more. Check colors in composite (above) and separated modes (right). Monitor Preview also works seamlessly with all of OpenRIP Symphony's advanced features like StripRITE™ Raster Imposition.* Check Imposition templates as you create, edit or apply them to digital files. Catch file and setup problems before you waste time and valuable media.



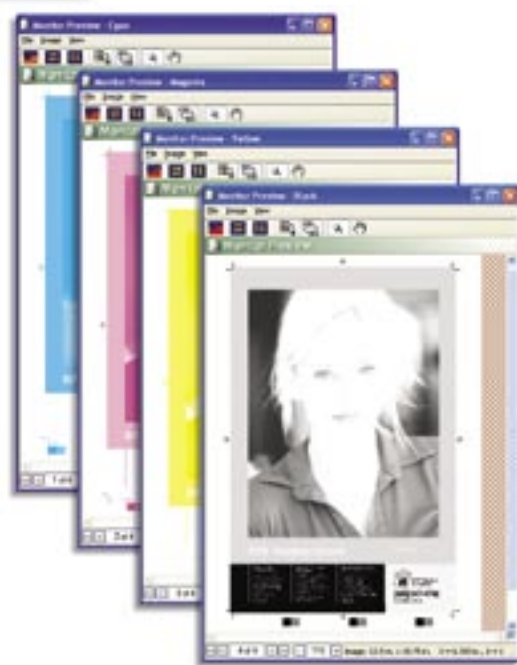
OpenRIP Symphony can create CIP3* files for your press, to automate press adjustment and maximize quality.



Don't waste time trapping files in front-end applications. Symphony's In-RIP Trapping with TrapZone™ lets you execute complex trapping commands directly from the RIP.



RasterView™ lets you check the ripped job, pixel for pixel, before sending it to your output device. With straightforward navigation and a trap viewing feature, you can see exactly how your job will image.



StripRITE™ Raster Imposition

The Raster Imposition Technology Engine (RITE) drives RIPit's new raster imposition feature, StripRITE.* StripRITE can generate spreads for books, step and repeat business cards, and perform other sophisticated imposition tasks quickly and easily. Because imposition takes place after the file is interpreted, it's more reliable and straightforward than ever before. Impose PS, EPS, PDF and Scanned pages in the same master layout, add or remove pages, combine/disable/enable individual colors, and much, much more.



Select the preferred bindery and work methods, set page sizes and sheet sizes, gutters, bleeds and offset. Add crop marks, registration marks and color bars.

KOOLKolor™ Proofing

RIPit's KOOLKolor* Proofing allows you to create color-accurate proofs on a variety of inkjet printers and plotters.



RIPit's Advanced Proofing feature lets you print any combination of colors in multi-color jobs for customer approvals and handy press proofs.

RIPit's KoolToning™ halftone simulator* provides traditional halftone dots on your inkjet proofs.

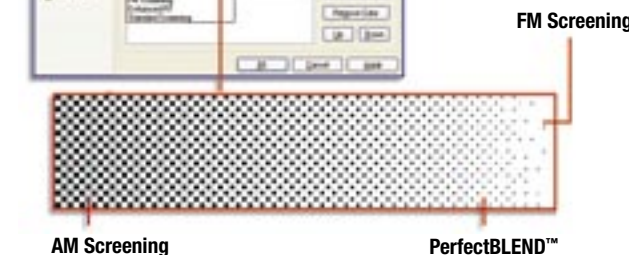
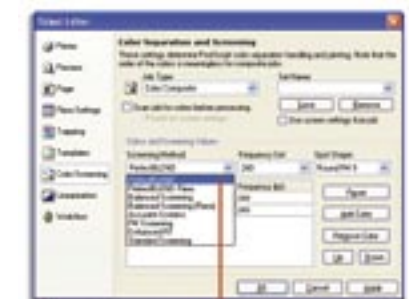
AdvancedScan™ Scan to Plate

RIPit's AdvancedScan* allows you to add paper-based originals directly into your digital workflow. Scan, cleanup, and straighten images. Colorize text and images, remove and add tints, delete and place photos, perform step & repeat, then save scans as low res PDFs for remote proofing!



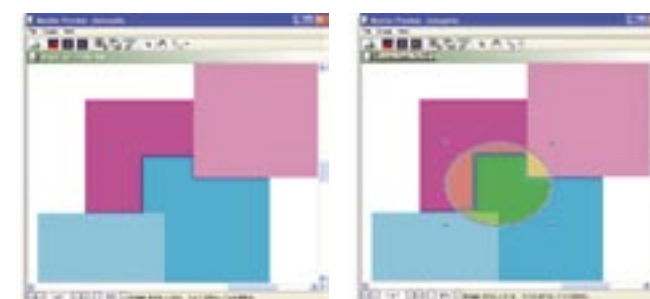
Multiple Screening Methods

OpenRIP® Symphony™ offers a variety of screening solutions* including: Adobe® Accurate Screens, Agfa® Balanced Screening and RIPit's PerfectBLEND™ Hybrid screening technology. PerfectBLEND combines the benefits of traditional AM screening and FM screening for linescreens up to 80% higher without increased run difficulty.



In-RIP Trapping with TrapZone™

OpenRIP Symphony allows you to quickly apply complex trapping commands from the RIP with Adobe® In-RIP Trapping (below left). RIPit's New TrapZone™ feature enhances Adobe In-RIP Trapping by letting you select separate trap settings for different parts of a page (below right). You can define zones while viewing the rasterized image, and immediately re-RIP the file to see the effects of your settings. Use Monitor Preview or RasterView to check file traps.



New TrapZone™ allows you to select desired Zones and apply traps to the selected areas.