

Throw away that old Analog Plate Camera!

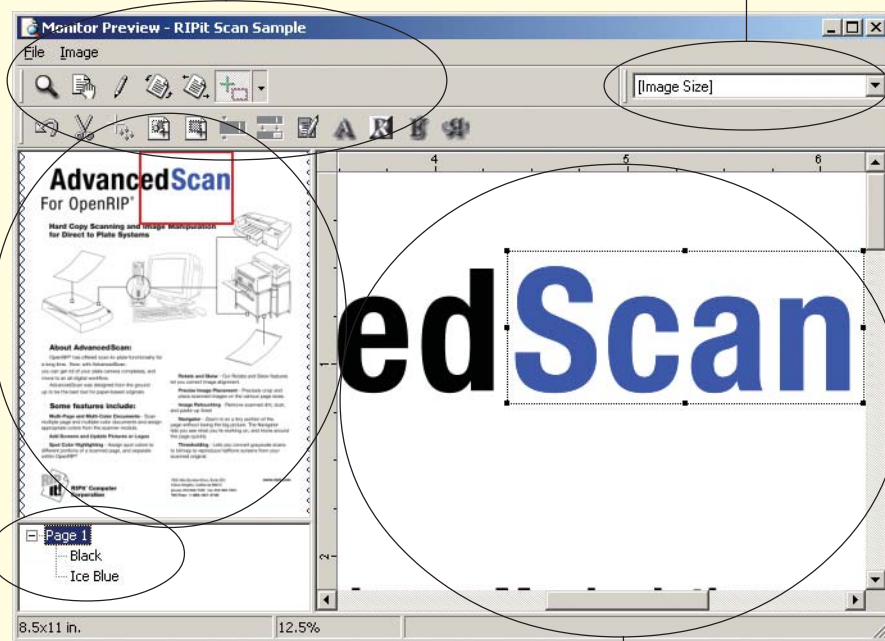
RIPit's new easy to use AdvancedScan™ gives you a complete digital workflow!

Navigator
Find your way around the page quickly

Page picker
Choose pages and view, change, or remove colors

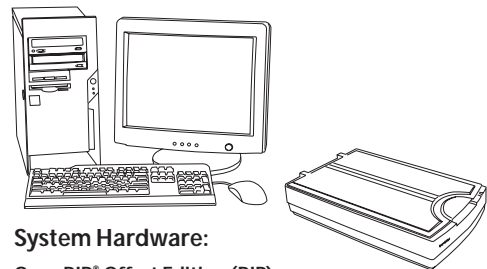
Tools
Let you touchup and modify your scanned document

Page Size
Set the finished page size for the image



Editing Window
View the page close-up and make changes

OpenRIP® AdvancedScan™ System



System Hardware:

OpenRIP® Offset Edition (RIP):

- Pentium 4 Processor
- 40+ GB Hard Drive, 256 MB Ram
- Windows 2000® Professional
- Integrated video, audio, 10/100 Ethernet
- CD-RW and 3.5" floppy drive
- 17" monitor, mouse, and keyboard
- CD Training

Microtek ScanMaker® 9800XL

- Bit Depth: True 48-bit Color
- Resolution: 3200 x 1600 dpi optical
- Scan Area: 12" x 17" (Tabloid Size)
- Interface Type: FireWire, SCSI II and USB

RIPit® Computer Corporation
www.ripit.com

OpenRIP Offset Edition Features:

- True Adobe® PostScript® 3™ Interpreter
- Direct PostScript, EPS, and PDF1.4 printing
- Page information, crop marks, targets, and color bar controls
- Custom Job Queuing with drag and drop
- 136 Adobe® PostScript® 3™ Standard Fonts
- RIPit KOOLKolor™ Inkjet Proofing System
- AdvancedScan™ (see inside right for details)

System Options:

- In-RIP Trapping
- StripRITE™ Raster Imposition
- Custom Plate Templates
- RIPit KoolToning™ Inkjet Halftone Simulator
- Color Plotter Support
- HP 5100 Laserjet (platemaker)

Network:

- Queues appear as printers in the Chooser on the Macintosh
- Download PS fonts and files, EPS and PDF files
- Windows® 95/98/NT/ME/2000/XP Compliant Printer
- HotFolders feature for Windows and Mac OS X workstations

7920 Alta Sunrise Drive, Suite 250
Citrus Heights, California 95610
Phone: 916-962-7050 Fax: 916-962-7053
Toll Free: 1-888-947-4748

Proofing:

- Monitor Preview, with Trap Preview feature
- Supports a wide variety of HP and Epson Inkjet Proofers and Plotters
- Advanced Proofing Features: Change spot colors on the printed proof, print any combination of job colors, reduce ink on any or all colors

Local Dealer

OpenRIP® AdvancedScan™ System

Scan to Plate and Image Manipulation for Digital Plate & Film Production



RIPit® Computer Corporation

About AdvancedScan™

OpenRIP® has offered scan-to-plate functionality for a long time. Now, with **AdvancedScan™**, you can get rid of your plate camera completely, and move to an all-digital workflow. **AdvancedScan™** was designed from the ground up as the ideal digital tool for paper-based originals.

Scan the page with our recommended tabloid scanner, or any high quality TWAIN-compliant scanner. (It can be attached to OpenRIP® or your workstation.) Then, open it in AdvancedScan and make any necessary changes or corrections for output. You can correct for page rotation and skew, touchup dirt and other image anomalies, crop the image and position it on the pagesize of your choice. Need to drop in a new photo? **No problem.** Clean up text? **Simple.** Create a colored box with screens? **Easy.**







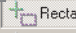
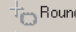
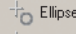
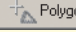
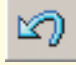







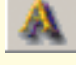
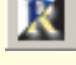


When you're done, export it as a high or low-resolution PDF to e-mail to a customer for proofing. Or export it as an EPS, TIFF or PS which you can use elsewhere. Or drop it in a queue, and have a plate out in a few minutes. Need to impose it? **We can do that.** Multi-page, multi-color jobs? **Yep.** And you can save the touched-up file so you don't have to re-scan it when you reprint the job in six months.

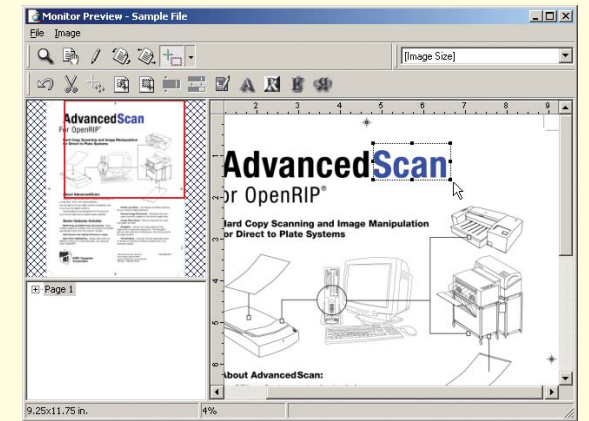


Here's a scenario:

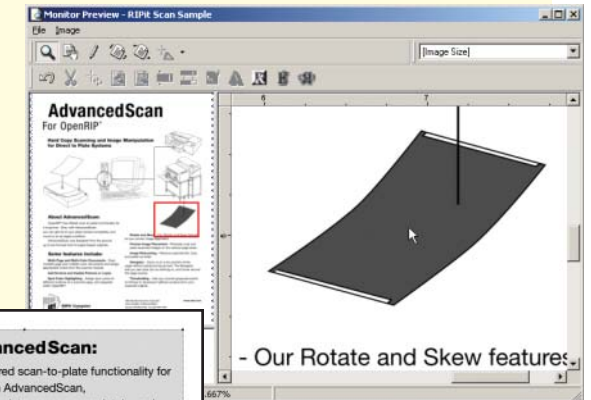
A **new customer** comes in to get reprints of his two-color business cards. His original is... a dingy two color business card, his last one. And it needs to be on the press in an hour so he can pick it up tomorrow morning on his way to a conference. Easy. Drop the card on your scanner and scan it. Open it up in **AdvancedScan™**, rotate, crop, and position it. Clean it up, and apply spot colors where you need them. Add it to a queue, and use In-RIP imposition to create a 4-up layout. Run the plates, and run the job!

AdvancedScan Features:

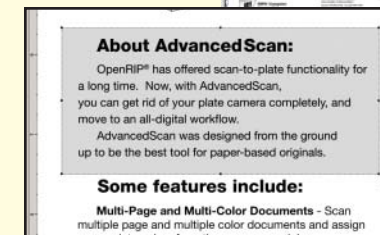
-  **Zoom Tool:** Move in and out of the image.
-  **Position Tool:** Position the image on the pagesize of your choice.
-  **Touchup Tool:** Remove items you don't want to print.
-   **Rotation and Shear Tools:** Rotate image and correct for skew.
-  **Region Tools:** Select the area to modify.
 -  Rectangle
 -  Rounded Rectangle
 -  Ellipse
 -  Polygon
-  **Undo:** Cancels the most recent action.
-  **Image Cropping Tool:** Select the portion of the image you want to use.
-  **Colorizer Tool:** Apply color to page elements.
-  **Place Image Tool:** Add a photo, or a region from another scanned job.
-  **Tint Area Tool:** Apply a background color to a region.
-  **Set Black/White Point:** Choose the tonal range of the page.
-  **Threshold Tool:** Convert grayscale to bitmap, controlling the cutoff point.
-  **Dirt Removal Tool:** Automatically delete specks and small image anomalies.
-  **Text Cleaner Tool:** Clean up jagged edges in scanned text.
-  **Invert Image Tool:** With a backlit scanner, you can scan film too.
-   **Flip Tools:** Re-orient the image.



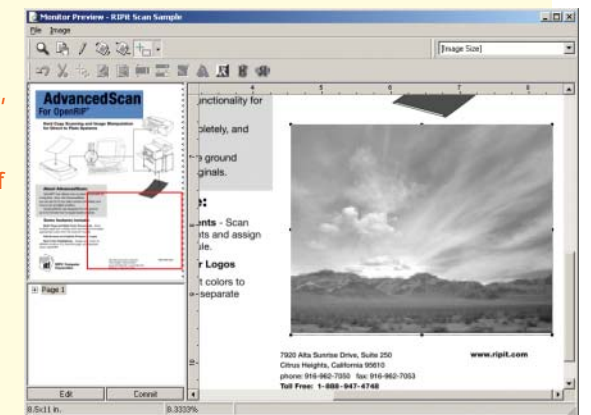
Select text to screen or colorize.



Add screens and colors to objects or as fields behind text.



Place photos, logos and clip art in any region of a page.



Save and archive your scanned files as EPS, TIFF, PDF or PS.

Save files as low res PDF for email proofing!

