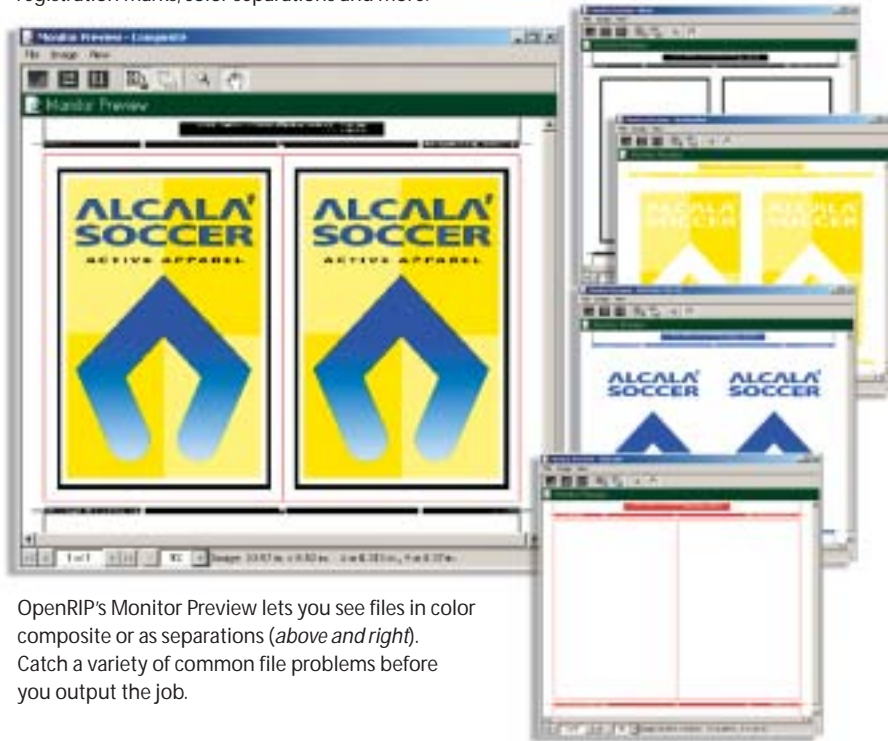


Monitor Preview (preflight) ⁵

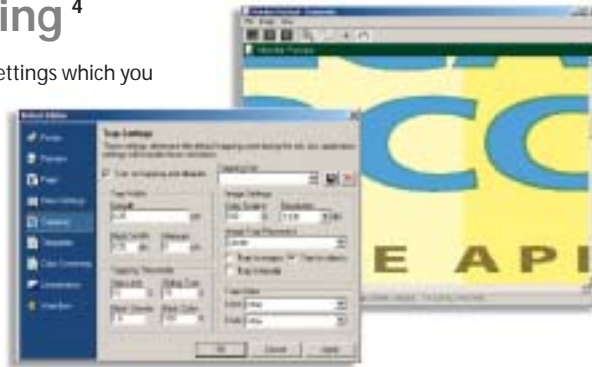
OpenRIP's monitor preview lets you check every detail of a digital file before you print a proof or image film! Check a file's links, fonts, traps, step & repeat settings, bleeds, bearer bars, registration marks, color separations and more.



OpenRIP's Monitor Preview lets you see files in color composite or as separations (above and right). Catch a variety of common file problems before you output the job.

In-RIP Trapping ⁴

OpenRIP honors trapping settings which you create within your front-end applications, but many trapping tasks can be done more quickly and easily with Adobe In-RIP Trapping. Then, using Monitor Preview, check file traps with our View Traps feature (right).



KOOLKolor™ Proofing

RIPit's KOOLKolor™ Proofing lets you create color-accurate proofs from a variety of inkjet printers and plotters. Choose from a variety of profiles to match proofing media.

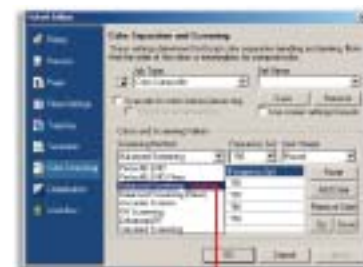


OpenRIP's Advanced Proofing feature lets you print any combination of colors (both CMYK and Spot), combine file colors, and provide customer proofs that are closer to the finished piece.

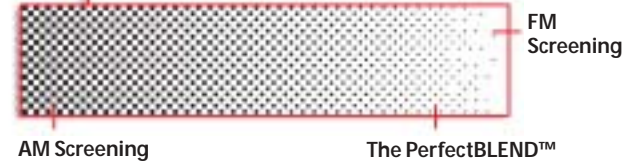


RIPit's KoolToning™ halftone simulator provides traditional halftone dots on CMYK and Spot Color proofs.

Flexo Screening Methods ⁴



OpenRIP offers a variety of screening solutions specifically for flexo including: Adobe® Accurate Screens, Agfa® Balanced Screening (with flexo angles) and RIPit's New PerfectBLEND™ Flexo Hybrid Screening. PerfectBLEND Flexo combines the benefits of AM Screening and FM Screening for higher linescreens and printable vignettes that get you closer to 0%.



AM Screening

The PerfectBLEND™



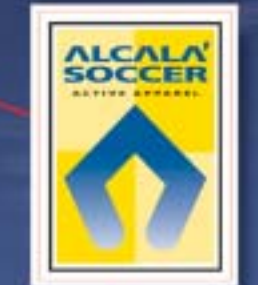
RIPit® Computer Corporation

RIPit North America
7920 Alta Sunrise Dr., Ste. 250, Citrus Heights, CA 95610
Sales Phone: 888-947-4748 email: sales@ripit.com
Support Phone: 916-962-7050 Fax: 916-962-7053
www.ripit.com

RIPit Europe AB
Hulukvarnsgatan 8, SE-553 11, Jönköping, Sweden
Sales / Support Phone: + 46-36-35 47 90 Fax: + 46-36-16 01 05
email: labelrip@ripit.com

The Workflow

OpenRIP® Flexo-Label Edition Intelligent Workflow for Label Prepress



Simple, Powerful Prepress Solutions

OpenRIP® Flexo Label Edition is a high-end Adobe® PostScript® 3™ Workflow designed for use in label prepress environments of all sizes, and by service bureaus catering to the flexographic and offset printing markets. This unique RIP is the result of many years of experience in label printing and is the latest refinement of a workflow concept that was first brought to the flexo market in 1994.

OpenRIP interface embodies our straightforward workflow philosophy: add the advanced features that our customers need, and make them easy to use. We have eliminated confusing and unnecessary steps that frustrate a prepress operator, while keeping the system completely customizable to meet any workflow needs.

OpenRIP is designed with an open structure and drives a wide variety of imagesetters, inkjet printers and plotters; and it offers TIFF-out and PS-out drivers for advanced Level 3 features and additional output options.

Custom Print Queues: What, How, Where and When

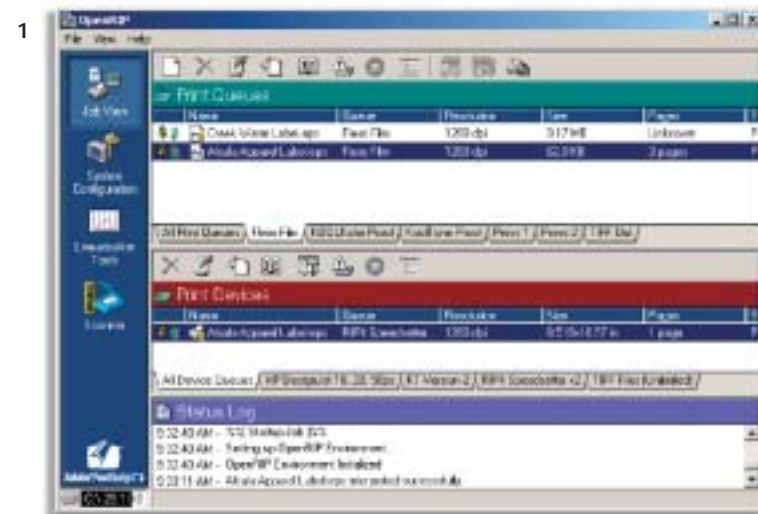
OpenRIP Flexo-Label Edition lets you customize your workflow by controlling output to match production needs through the use of custom Print Queues. Print Queues¹ let you choose where the file is going, how the job will run and what press will run it. You can specify device and media, resolution, linescreen, trap amounts, linearization, dot gain compensation, color profiles and more.

There are several options for sending jobs to OpenRIP: Print Queues appear on your network as network printers, so you can print to them as you would to any other printing device². You may also add PostScript, EPS, or PDF files, directly into OpenRIP with a PS Downloader, watched HotFolders, from CD ROM, or (using built in LPR support) print directly to OpenRIP via the Internet³.

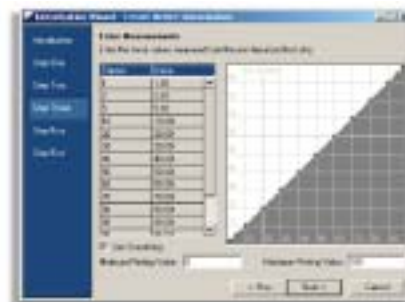
Once a file is in a Print Queue, you can quickly edit and apply additional features⁴ for even more control of job setup and output.

Send a file to the wrong Print Queue? Simply drag & drop the file into another Print Queue to instantly change its output device.

Direct Printing: Print directly from Mac and Windows applications. Select a Print Queue at OpenRIP and send the file as you would to any network printer.

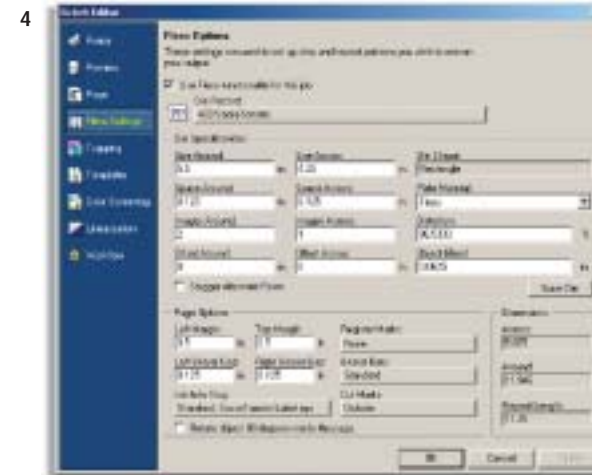


Control that Dot: OpenRIP Linearization and Dot Gain Compensation Wizards let you precisely calibrate your imagesetter and presses.



Let OpenRIP® Flexo-Label Edition Do the Work!

Prepress for labels has never been easier. OpenRIP handles all the repetitive and tedious work of preparing files for output: it steps and repeats while applying distortion, strips in bearer bars and registration marks, and performs trapping. That lets prepress operators focus on preparing artwork in a simple one-up workflow. And, it guarantees consistency in how all jobs are processed, minimizing costly human errors⁴.

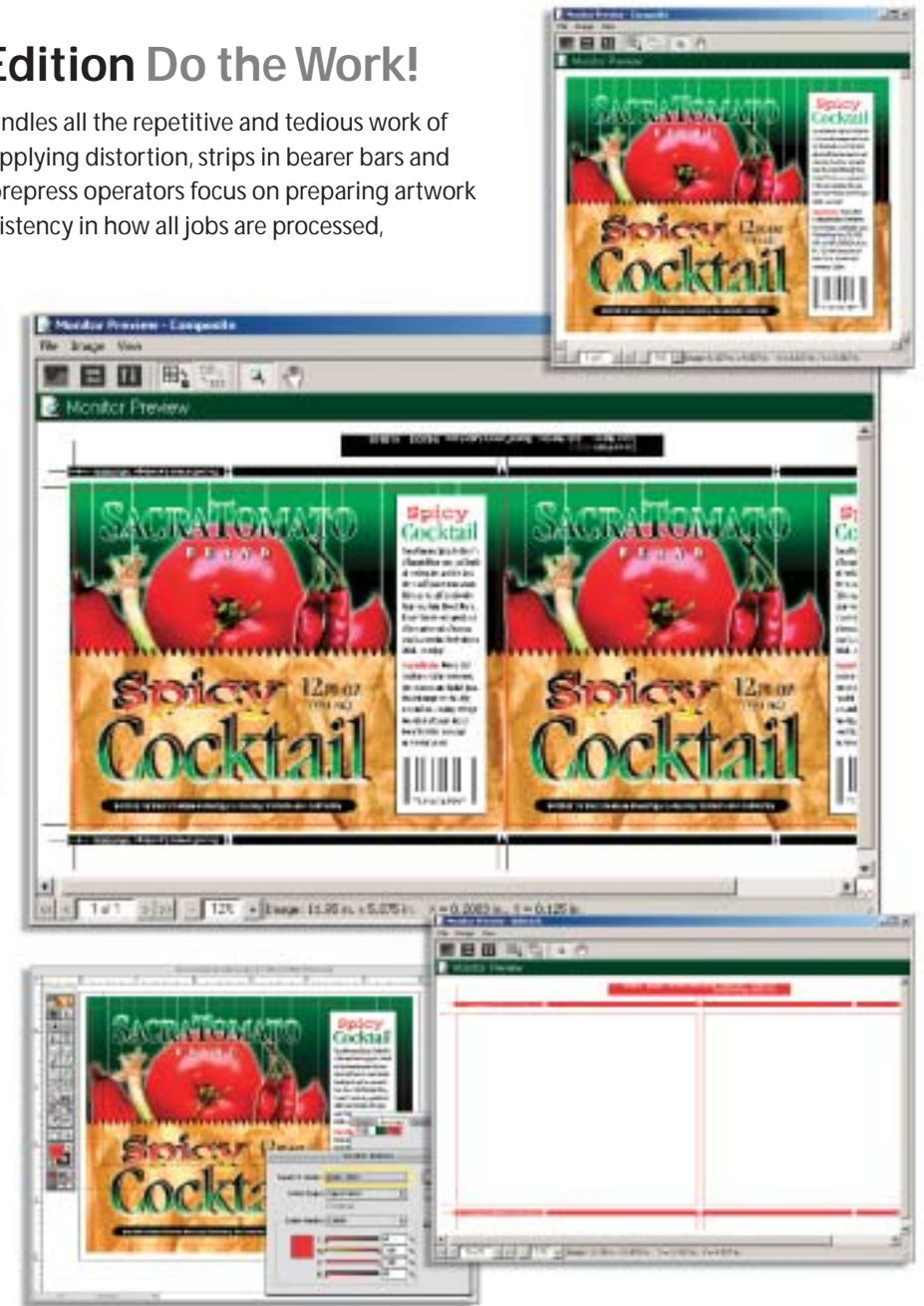


Quickly edit Die and Step & Repeat settings, Bearer Bar and Registration mark position, plate media and distortion.



Use OpenRIP's Die Data-Base to select specific dies for specific files, a single die for many files or automatically with RIPit's SmartDie™ feature.

SmartDie™ lets you specify dies from front-end applications (right). OpenRIP recognizes the die along with file colors (above). You can also select dies and colors for output as well as combine process and spot colors (above).



RIPit Remote: Control raster files on OpenRIP remotely from MacOS-X and Windows workstations. Preview and output files.

