

AdvancedScan™

Scan to Plate and Image Manipulation for CtP and Film System

With AdvancedScan™ you can get rid of your plate camera completely, and move to an all-digital workflow. AdvancedScan was designed from the ground up as the ideal digital tool for paper-based originals.

Simply scan the page with our recommended tabloid scanner, or any high quality TWAIN-compliant scanner. Then, open it in AdvancedScan to make any necessary changes or corrections for output. You can correct for page rotation and skew, touch up dirt and other image anomalies, crop the image and position it on the page size of your choice.

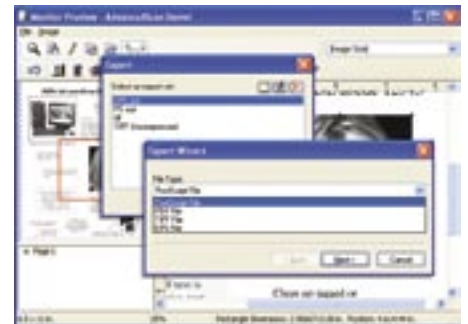
When you're done, export it as a high or low-resolution PDF to e-mail to a customer for proofing. Or export it as an EPS, TIFF or PS file which you can use elsewhere. Or drop it in a print queue to your supported output device. Need to Step & Repeat your edited image? **Go ahead.** Multi-page, multi-color jobs? **Yep.** And you can save your edited files to use over again.



Place photos, logos and clip art in any region of a page.



Add screens and colors to objects. Replace faint and broken screens with new tints or colors.



Save and archive scanned files as... PS, EPS, TIFF and PDF or... Save low res PDF for email proofing!



RIPit® Imaging Systems, Inc.

SPECIFICATIONS ►

AdvancedScan™ Features:



Zoom Tool: Move in and out of the image.



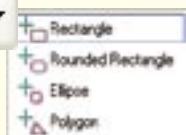
Position Tool: Position the image on the page size of your choice.



Touchup Tool: Remove items you don't want to print.



Rotation and Shear Tools:
Rotate image and correct for skew.



Region Tools:
Select the area to modify.



Undo: Cancels the most recent action.



Invert Image Tool: With a backlit scanner, you can scan film too.



Flip Tools: Re-orient the image.



Step & Repeat Tool: Quickly Step & Repeat and add printer's marks.



Resize Tool: Correct for Optical Distortion in the scanner.



Image Cropping Tool: Select the portion of the image you want to use.



Colorizer Tool: Apply color to page elements.



Place Image Tool: Add a photo, or a region from another scanned job.



Tint Area Tool: Apply a background color to a region.



Set Black/White Point: Choose the tonal range of the page.



Threshold Tool: Convert grayscale to bitmap, controlling the cutoff point.



Dirt Removal Tool: Automatically delete specks and small image anomalies.



Text Cleaner Tool: Clean up jagged edges in scanned text.

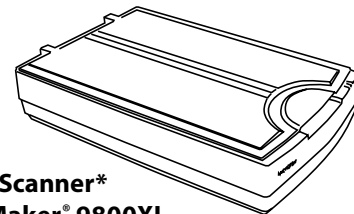


Eraser Tool: Erase the selected area of an image.

Minimum System Requirements

Recommended Hardware

- Pentium III - 800MHz minimum, Pentium 4 Processor recommended
- 5 GB available drive space
- 128 MB RAM minimum, 256MB recommended
- Windows® NT/2000/XP Professional
- 24bpp, 1024x768 or higher recommended
- Network card for transmitting jobs to a RIP
- Firewire or USB 2.0 Port



Recommended Scanner*

Microtek ScanMaker® 9800XL

- Bit Depth: True 48-bit Color
- Resolution: 3200 x 1600 dpi optical
- Scan Area: 12" x 17" (305 x 432 mm)
- Interface Type: FireWire, SCSI II and USB
- Scan Wizard for OpenRIP (only available from RIPit)
One-pass scanning of text (1-bit) and photos (8-bit)

*AdvancedScan is compatible with any TWAIN compliant scanner

Local Dealer



RIPit® Imaging Systems, Inc.

7920 Alta Sunrise Drive, Suite 250
Citrus Heights, California 95610
phone: 916-962-7050 fax: 916-962-7053
www.ripit.com

© 1993-2006 RIPit Corporation. All rights reserved. OpenRIP, RIPit, the RIPit logo and AdvancedScan are trademarks of RIPit Computer Corporation. Agfa and Balanced Screening are registered trademarks of Agfa Corporation. Adobe, Postscript 3, and Accurate Screens are registered trademarks of Adobe Systems. Windows XP Professional is a registered trademark of Microsoft Corp. Intel Pentium is a registered trademark of Intel Corporation. All other company and product names are trademarks or registered trademarks of their respective owners. Prices and Equipment Specifications subject to change without notice.