

OpenRIP® Flexo 5.0

The most productive automated workflow on the market



RIPit's new OpenRIP® Flexo 5.0 is the latest edition of our award winning OpenRIP Series. OpenRIP Flexo 5.0 offers a host of feature and performance enhancements designed to increase prepress production and accuracy. It's so easy to handle complex digital files and output to multiple devices in your shop including plateset

PREPRESS AUTOMATION

OpenRIP Flexo 5.0 with SmartDie™ performs all the repetitive and tedious work of preparing files for output by automatically applying step & repeat, distortion, bearer bars and traps to suit a wide variety of production needs. Now prepress operators can focus on preparing artwork in a simple one-up workflow.

Die Database and SmartDie Functionality: The primary feature of OpenRIP Flexo 5.0 is our exclusive Die Database. Die Database allows you to create, edit and store custom die templates to suit an unlimited amount of production scenarios. You can specify step & repeat settings, apply bearer bars and automatically calculate and apply the correct distortion value instantly and accurately eliminating costly human errors.

Die Database is centrally located within the workflow, where you can quickly select and apply the correct die for specific jobs, batch process

a group of jobs, or use RIPit's SmartDie feature and let OpenRIP Flexo automatically apply the correct die for you. If your job specifications change, assign a different Die from the Die Database, or customize your settings on the fly. Other features include Stagger and Double Burn Overlapping Objects for added flexibility.

Bearer Bars can be automatically stripped in using the standard OpenRIP Flexo 5.0 bearer bars, or by adding in your own custom bearer bars. Set bearer bar gaps, margins, cut marks, register marks and file information to your stepped images. Plus, standard bearer bars can be screened back to 50% or 25%, to reduce ink build-up on the bar. Color density swatches can be added just outside either or both bearer bars to ensure color quality consistency.

SmartDie prepress automation delivers complete workflow automation to dramatically increase prepress production and accuracy. Simply tag your PostScript, EPS or PDF files with a SmartDie number and OpenRIP Flexo will automatically apply the correct steps, gaps, bearer bars, marks and distortion.



In-RIP Trapping with TrapZone™: Many trapping tasks can be applied quickly and easily with OpenRIP Flexo's built-in Adobe In-RIP Trapping and RIPit's New TrapZone. Trap vector, raster, CT, or 1-bit files to each other. Controlling sliding traps, miter trap joins, and "keep-aways" are just a few of the features that Adobe In-RIP Trapping has to offer.

TrapZone enhances the Adobe In-RIP Trapping by allowing you to select regions through Monitor Preview with different trap settings. Simply re-preview the job to apply and view changes.



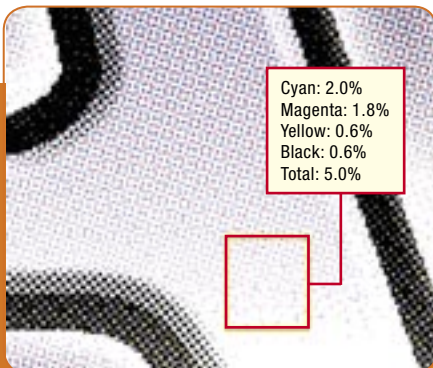
Flexo 5.0 delivers a new level of workflow automation with a wide range of applications. New OpenRIP Flexo 5.0 is an Adobe® PostScript® 3™ RIP, which makes it suitable for use with various printers, imagesetters, digital presses, and proofing devices.



MULTI-STAGE PROOFING

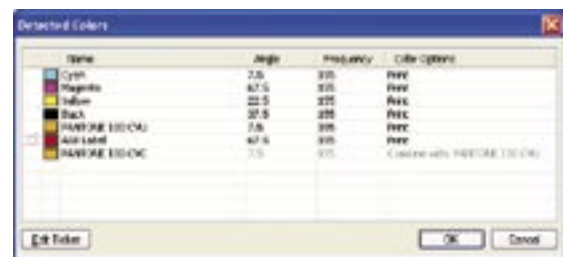
OpenRIP Flexo 5.0 offers a variety of proofing solutions designed to help the user catch file and setup problems before they become expensive mistakes. OpenRIP Flexo's proofing solutions include:

Monitor Preview: OpenRIP Flexo's monitor preview lets you check every detail of a digital file before you print a proof! Check a file's links, fonts, traps, step & repeat settings, bleeds, bearer bars, registration marks, color separations and more. Monitor Preview lets you view files in color composite or as separations, so you can catch a variety of file problems before you output the job.



RasterView™: OpenRIP Flexo 5.0 includes RasterView, a robust quality assurance tool for film and plates. RasterView lets you effectively examine rasterized files at the full resolution of your output device prior to outputting jobs on your imagesetter, platesetter, proofer, or other output device. You can examine separations, traps, halftone screens, tint values and screen angles using the simple yet effective tools within RasterView. Using the Ink Density Tool will enable you to measure screen values to see if the job meets your minimum screen percentage.

For those who also do offset work, the Analyze Ink Usage tool can create CIP3 files for presses which support automatic ink key settings. Plus, you can create ink key setting charts for non-automated presses. RasterView can also calculate ink coverage values for each separation with an Ink Usage Analysis.



Color Mapping Control: OpenRIP Flexo automatically combines spot colors which use the same number and ends in "CVC", "CV", "CVU", etc... You can also edit a file's colors, combine colors or simply turn specific colors off.

ExportProof: Save raster files as PDFs, TIFFs and JPEGs to preview at workstations or E-mail directly to customers.

PROOFING *continued*

KOOLKolor™ Proofing: RIPit's KOOLKolor Proofing technology lets you create color accurate proofs from a variety of inkjet printers and plotters. Select ICC profiles as well as destination profiles for a proof that simulates your final printed product.

Advanced Proof: RIPit's versatile color control technology gives you the power to print and combine any combination of colors, or assign new colors to satisfy client changes. Advanced Proof's editing tools allow you to change a color to a specified percentage to reduce its tonal value. Die lines or key lines can be printed separately on inkjet film as an overlay as well.



KoolToning™ Halftone Simulator:

Get inkjet proofs with the actual halftone dots and screen angles you have specified for your job. CMYK and Spot colors show with the actual screening algorithm and line screen.

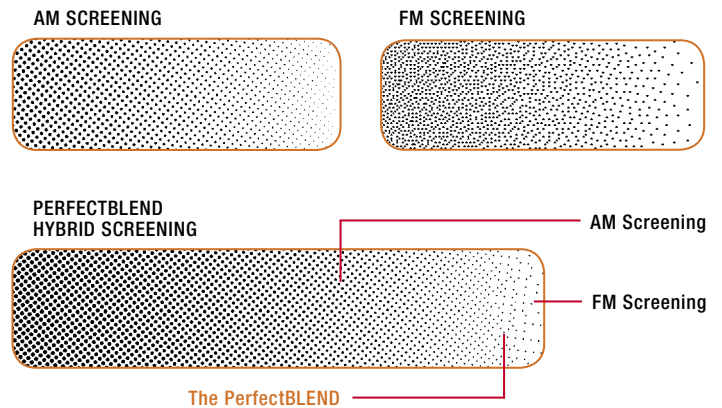
DEVICE & IMAGE QUALITY CONTROL

OpenRIP® Flexo 5.0 can directly drive over one hundred imagesetters, platesetters and plotters. With PS-Out and Tiff-Out features, OpenRIP Flexo allows you to print to many more Postscript output devices.

RIP-Integrated Color Management: OpenRIP Flexo 5.0 detects embedded color profiles, and lets you select source and destination profiles to be used during file processing. This allows you to create a fully automatic color managed workflow and provides better process color separation conversions of RGB images within a job.

Screening Technologies: OpenRIP Flexo 5.0 offers a variety of screening solutions specifically designed for Flexo presses including: Adobe® Accurate Screens, Agfa® Balanced Screening for Flexo (with true round dots) and RIPit's PerfectBLEND™ Flexo hybrid screening.

PerfectBLEND Flexo advanced hybrid screening option is designed to immensely improve overall print quality. Combine the benefits of AM Screening and FM Screening for higher linescreens and printable vignettes while maintaining screen integrity.

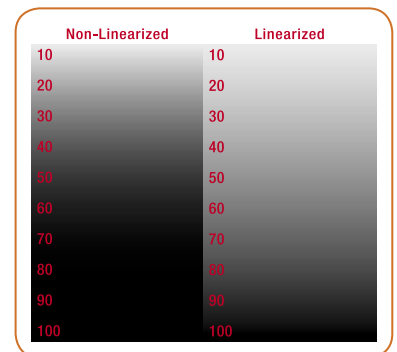


NetImager: Your RIP is no longer bound to the length of your imagesetter cable. NetImager lets you have your OpenRIP Flexo workstation in one location, while the imagesetter or platesetter is located remotely. With NetImager, OpenRIP Flexo 5.0 behaves as though it is connected directly to the imager.

OpenRIP® Remote: You can control your final rasterized files on OpenRIP Flexo 5.0 from Mac OS X and Windows workstations. View your rasterized images with the same accuracy and control used in OpenRIP Flexo's RasterView, then proof and send your files to output devices remotely. OpenRIP Remote also allows you to save raster files as PDF's, TIFF's and JPEG's to soft proof at workstations or email directly to customers.

Linearization & Dot Gain Compensation:

Our easy-to-use Linearization and Dot Gain Compensation Wizards let you precisely calibrate your imagesetter and "fingerprint" your press. You can create a profile of every press and job scenario for better color control and job consistency.



RIPit Flexo Division
7920 Alta Sunrise Drive, Suite 250
Citrus Heights, CA 95610
Sales: 888-947-4748
Fax: 916-962-7053
email: flexo@ripit.com
www.ripit.com

RIPit Europe AB
Hulukvarnsgatan 8, SE-553 11
Jönköping, Sweden
Sales / Support: + 46-36-35 47 90
Fax: + 46-36-35 47 91
email: eurosales@ripit.com